

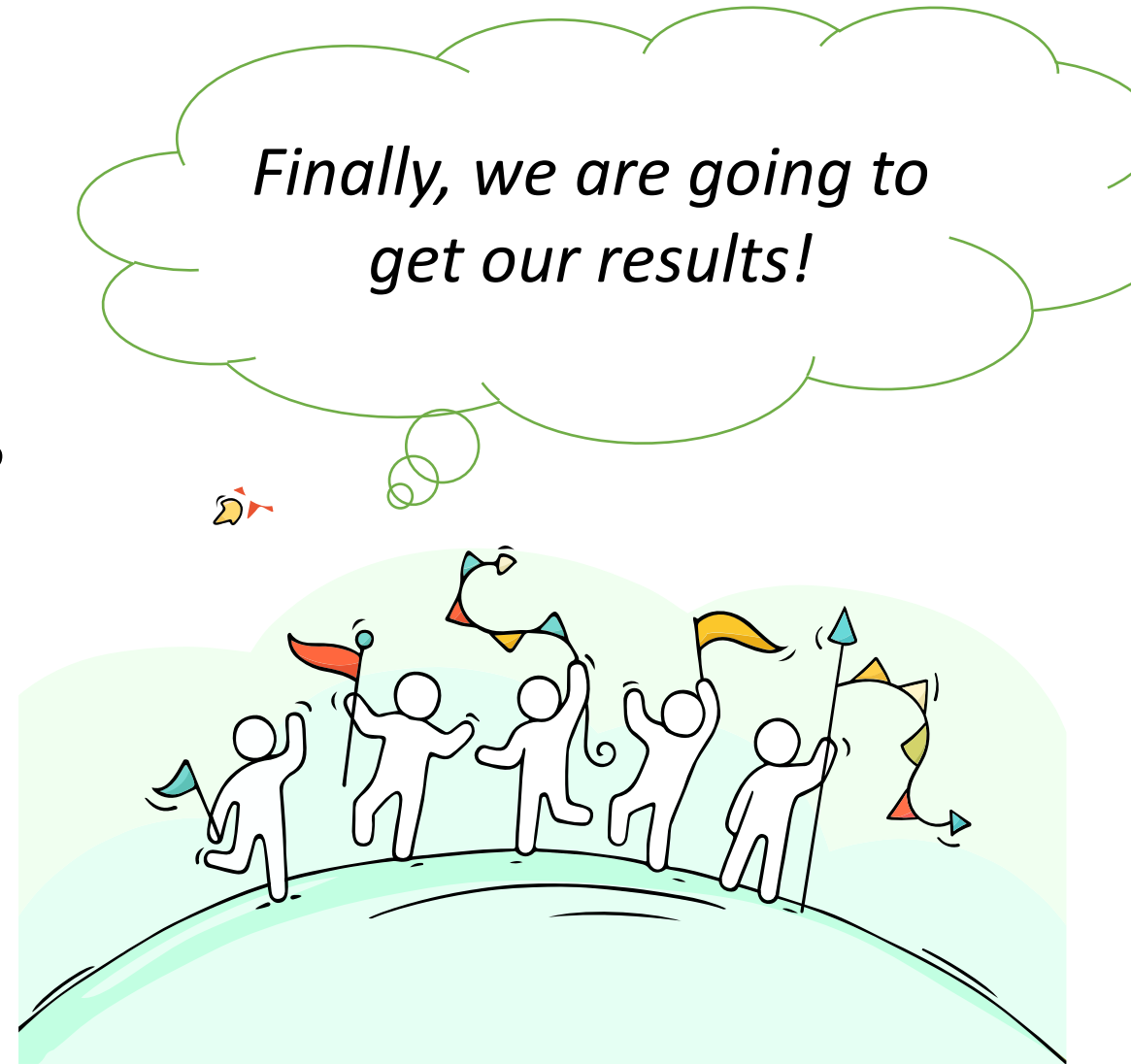
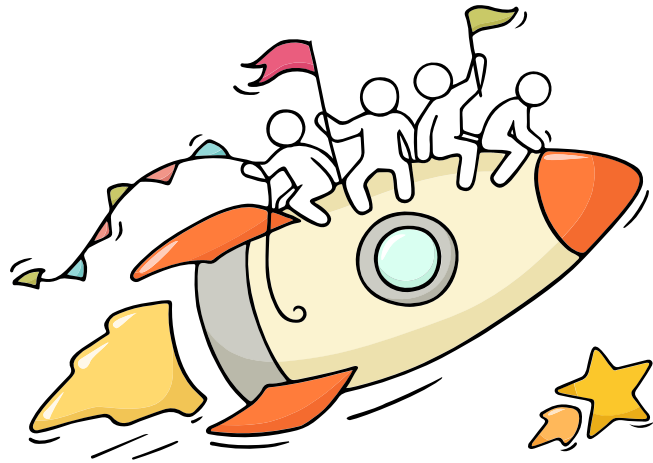
Welcome Back!

Briefing Slides for Release of N-Level Results



Dear students,

As we gather here today, let us all celebrate our efforts!



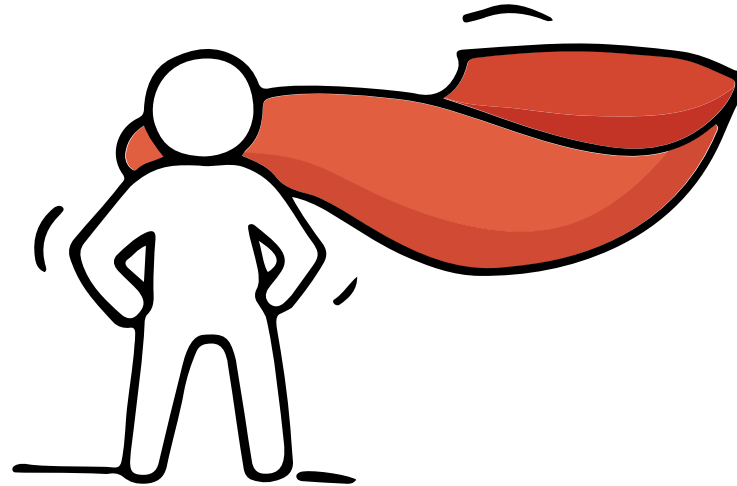
Agenda



- Student Well-being
- ECG
- Admission Exercise
 - DPP
 - PFP
 - ITE EAE
- Administrative Matters

Think about your opportunities

*Are we all going to
be okay?*



Remember that **everyone's learning journey is different**
but **we can each have a fulfilling outcome!**

No matter the circumstances, there is always a way forward.

Stop

- Calm yourself down. Take a few deep breaths.

Think

- Think through the different options that are available for you. Keep things in perspective.
- Remember that the N-Level is one part of your life journey and not the destination.

Do

- Approach a trusted adult and seek his/her help. Have a conversation with this person about what would be best for you.
- Make a decision and take action based on your options.

When you receive your results, you may experience a range of emotions.

Managing these emotions well will allow you to stay calm and make rational decisions.

Keep a lookout for some of these signs in your peers or yourself.

How can we support one another?



D
I
S
T
R
E
S
S

Deliberately avoiding others

Increased irritability, restlessness, agitation, stress and anxiety

Sending or posting moody messages on social media

Talking about death or dying

Reacting differently or gradually losing interest in things they used to like

Eating more than usual or having a much reduced appetite

Sleep pattern changes with difficulty falling asleep or oversleeping

Slowing down of energy levels

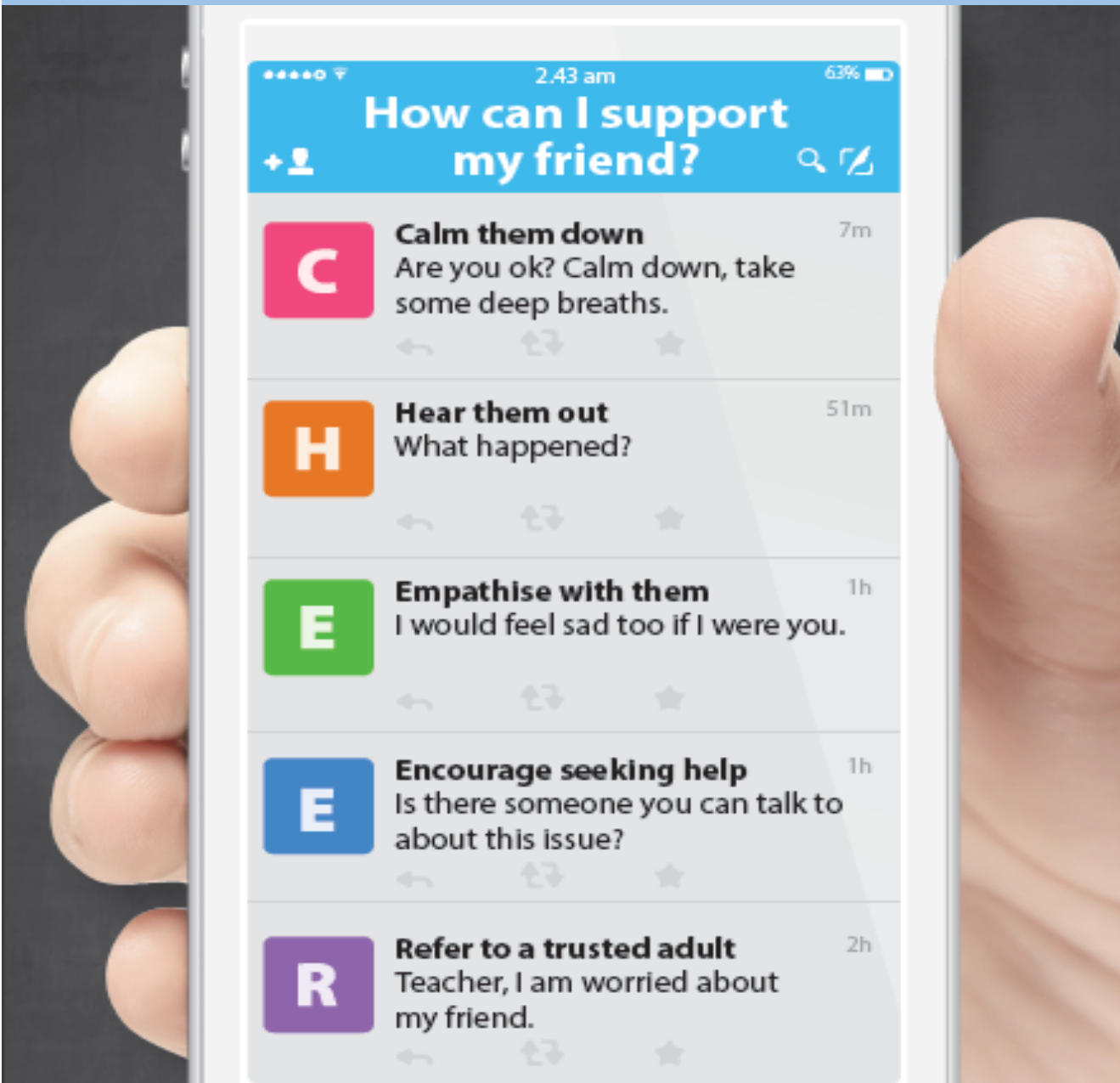
If you notice any of these signs in yourself or your friends, **have a chat with your school counsellor or teacher**

Or contact SOS 24-hour hotline at **1800-221-4444**

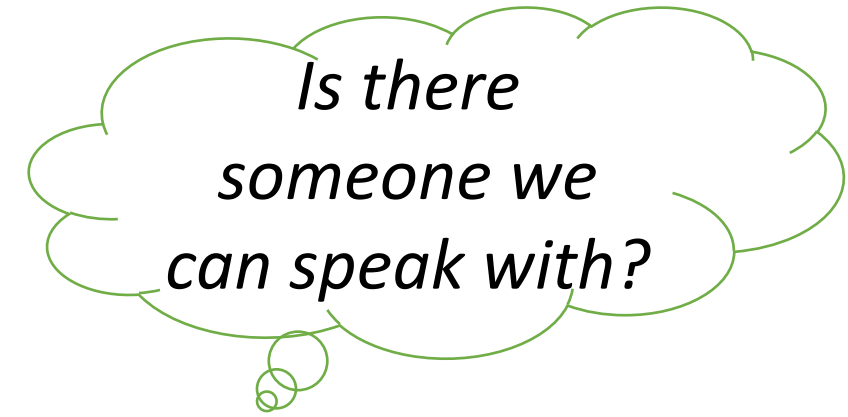
Keep a lookout for your friends in distress. You can support them in the following ways:

Supporting Your Friend

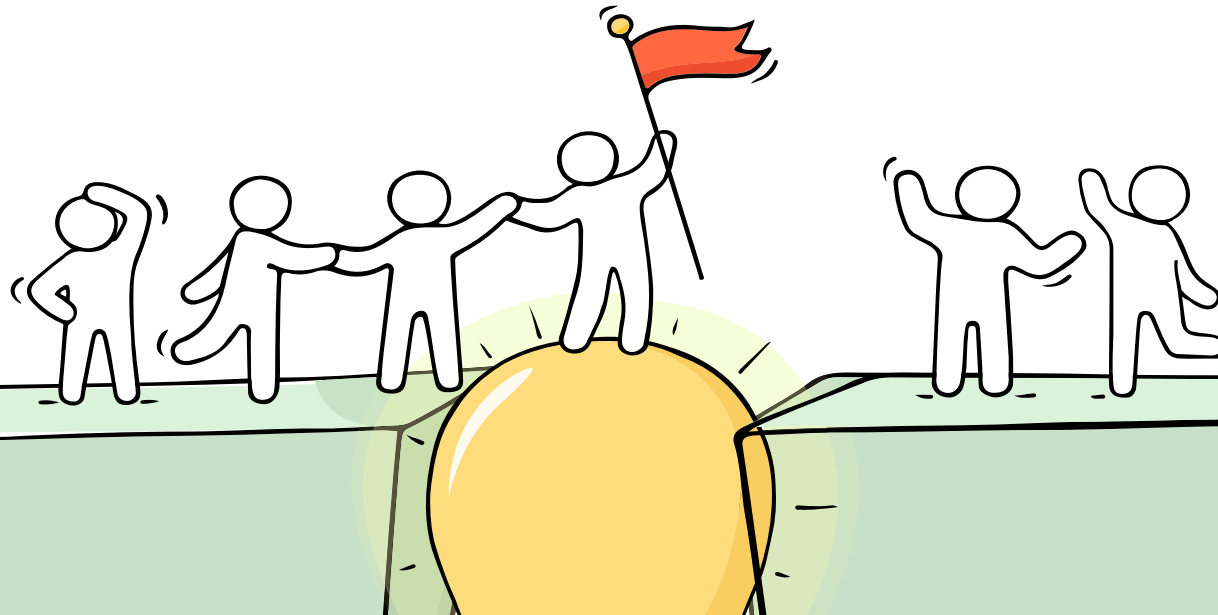
We may each experience different emotions upon receiving the results. You can share your friends' joy by congratulating them or give words of encouragement to friends who may be disappointed with their results.



Reaching out for help is a sign of strength, not weakness.



If you have any concerns or are not coping, do reach out to someone you trust and speak with them. It could be a parent/guardian, teacher, School Counsellor or a friend that you can talk to.



Help is readily available for you.

There are other hotlines and chats available if you are more comfortable seeking help using these platforms.



SOS

SOS provides round the clock emotional support for those in distress, thinking of suicide or affected by suicide. This service is manned by trained volunteers.

Call: **1-767 or 1800-221-444**
(24-hour helpline)

There are also alternative avenues for emotional support through email and text messaging.

Email: **pat@sos.org.sg**
(Response within 48 hours)

SOS Care Text: **www.sos.org.sg**
(6pm – 6am on Mon to Thu and 6pm to 11:59pm on Fri)

Community Health Assessment Team (CHAT)

If you experience prolonged difficulties, CHAT provides personalised and confidential mental health checks and face-to-face consultation for youth aged 16 to 30. To speak with a youth support worker, you can:

Visit: **CHAT Hub at *SCAPE, #05-05** or
Call: **6493 6500/ 6501** or
Email: **CHAT@mentalhealth.sg**

Help is readily available for you.

There are other hotlines and chats available if you are more comfortable seeking help using these platforms.

eC2

eC2 is an e-Counselling Centre where you can talk to a trained counsellor about the issues you are facing, right where you are.

Youths may chat with a counsellor online at: www.ec2.sg

Monday – Friday
(Excluding Public Holidays): 10am – 12pm & 2pm – 5pm

TOUCHline

TOUCHline is a helpline to provide youths with emotional support and practical advice.

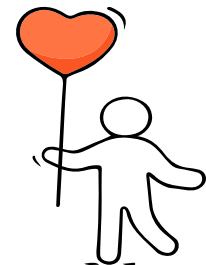
Call: **1800 3772252**

Monday – Friday
(Excluding Public Holidays): 9am – 6pm

mindline.sg

mindline.sg is an online platform that provides tools, tips and resources to help you manage your health and well-being. Explore and find out how you can improve your mental well-being and support your friends too.

Find out more: www.mindline.sg



Help is readily available for you.

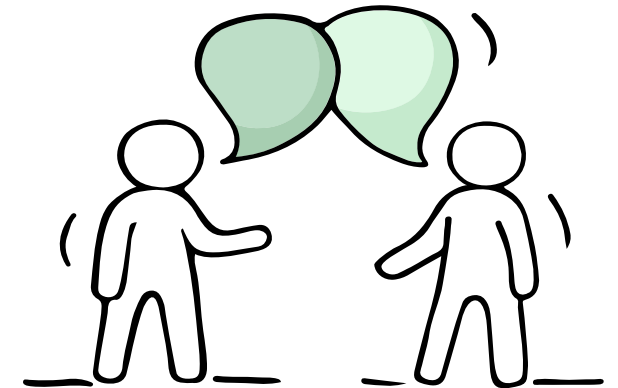
Reach out to an ECG Counsellor!

Make an appointment to speak with your ECG Counsellor in school through <https://go.gov.sg/kathykoh>

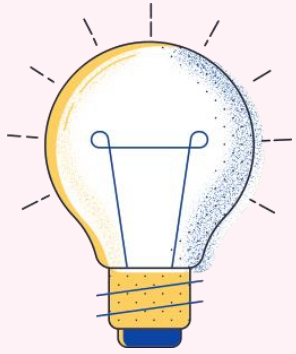


*Is there
someone we
can speak with?*

Make an online or phone counselling appointment with the ECG Centre @ MOE (Grange Road) through <https://go.gov.sg/moe-ecg-centre>



Thinking About Your Next Step?



Who am I?

Where do I want to go?

How do I get there?

Resources to help you make informed decisions



About MySkillsFuture

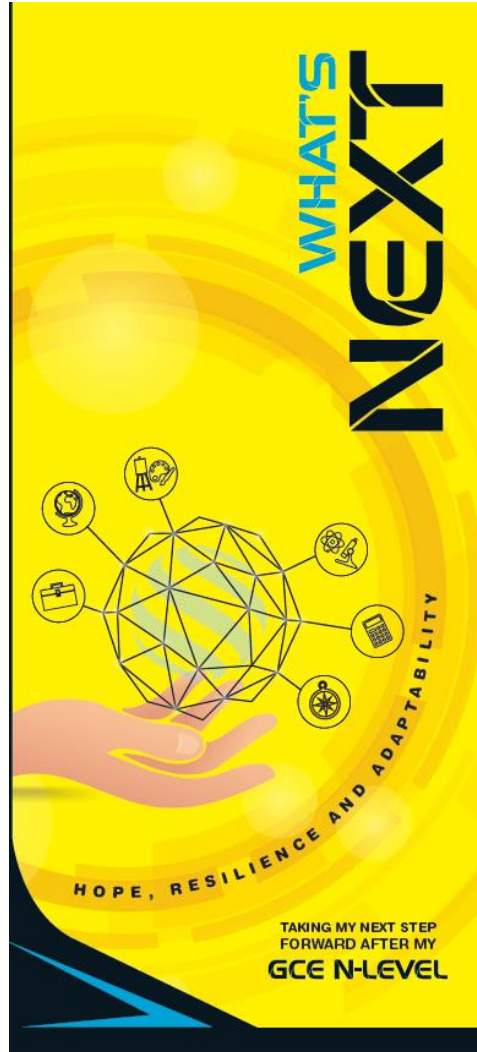
A one-stop portal that empowers you to embark on a journey of self-discovery and make informed education and career choices. Use the information and tools to explore various education and career pathways, and take charge of your future.

Where can we find more information?



<https://go.gov.sg/mySFsec>

Resources to help you make informed decisions



*Where can we find
more information?*



<https://go.gov.sg/whats-next-nlevel>

Post-Secondary Education

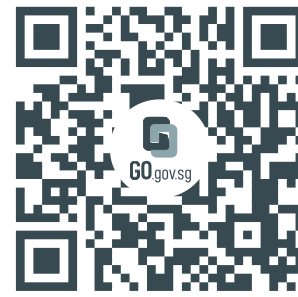
Learn more about the admissions exercises and programmes

<https://moe.gov.sg/post-secondary/admissions>



Learn more about the post-secondary education institutions

<https://moe.gov.sg/post-secondary/overview>





Unsure of what's next?

Explore different jobs and industries with **On My Way (OMW)**. Find out if your career goal and educational pathway match your interests, values and ambitions.

Get key info on **jobs and industries** that you aspire to enter, with quick FAQs on **how to get there!**



Peek into a **day in the life of professionals** from various fields with our video series.


Connect with schooling seniors, go on learning journeys, or tune in to our industry panels, we've got programmes planned from Nov 2022 to Feb 2023

Go to <https://go.gov.sg/omw-moerrp2023> and let's get you on your way!




<https://go.gov.sg/omw-moerrp2023>

KNOW IT ALL
COPY URL TO SHARE



INVESTMENT BANKER

Investment Bankers sell securities and provide strategic advice to their clients. They advise clients on raising funds from the equity/debt capital markets and merger and acquisitions (M&A).




RESponsibilities

- Advise corporate clients on product offerings, private equity transactions, mergers and acquisitions, and valuations.
- Determine the **best strategy** and place to **raise debt or equity capital**.
- Prepare necessary documents to **protect the company and investor**.
- Ensure all **government regulations have been adhered to**.
- Perform financial modelling using valuation methods.

SKILLS NEEDED

HARD SKILLS

- Financial Modelling (e.g. DCF, Public Comps, M&A Comps)
- Data Analytics
- Strong Mathematical and Numerical Skills



SOFT SKILLS

- Influencing and negotiation skills
- Innovative Problem Solving
- Customer Orientation
- Communication

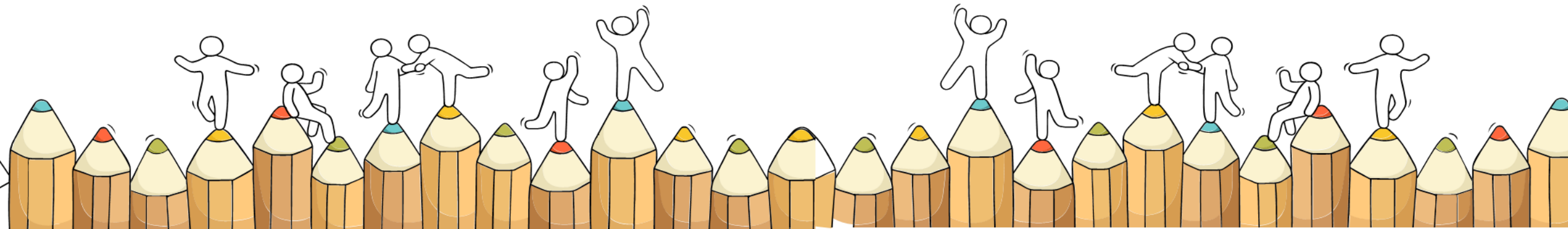
The N-Level is not
the destination.

It is part of your
education journey.



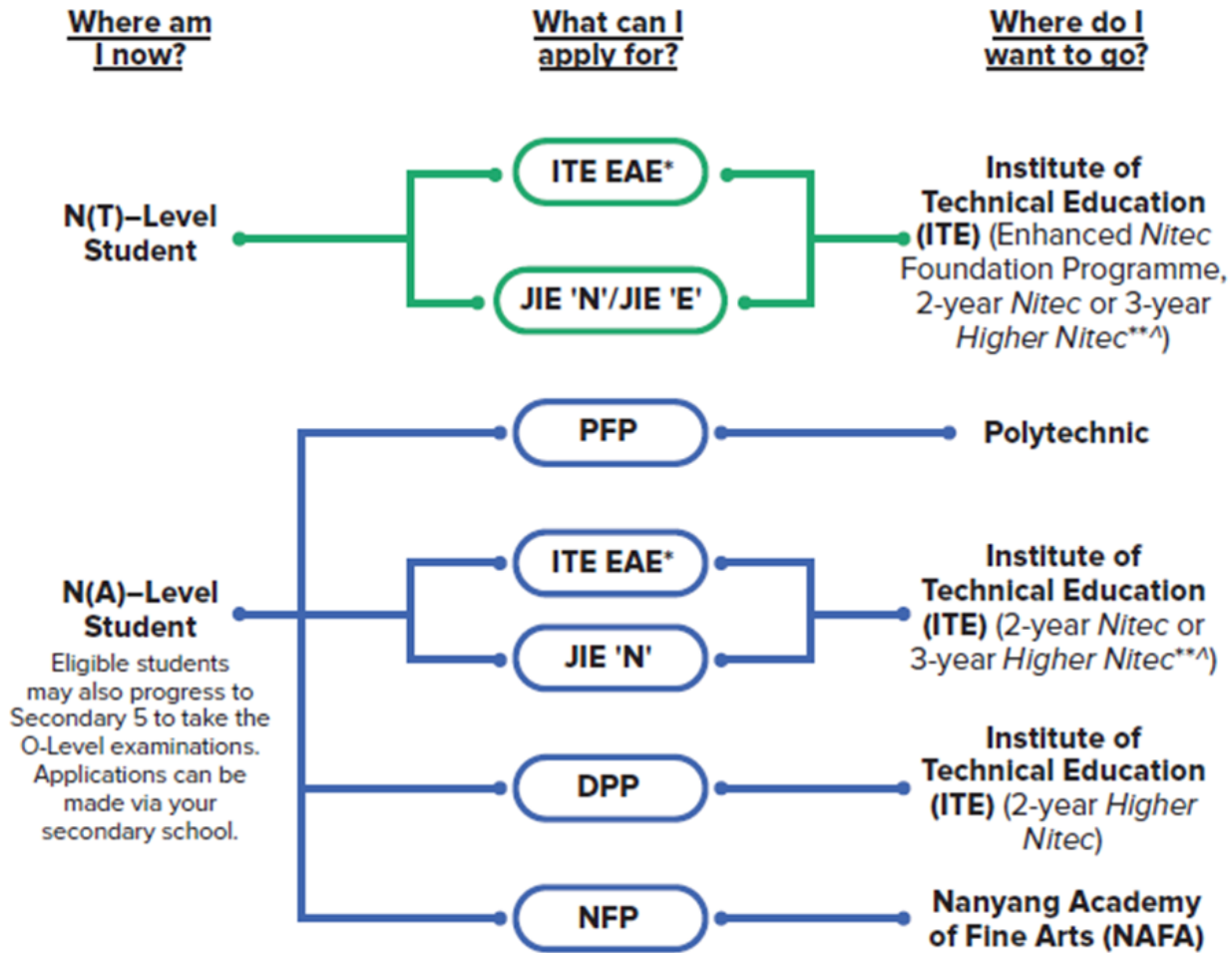
Admission Exercises

Things to note





Admissions Exercises for N-Level Students



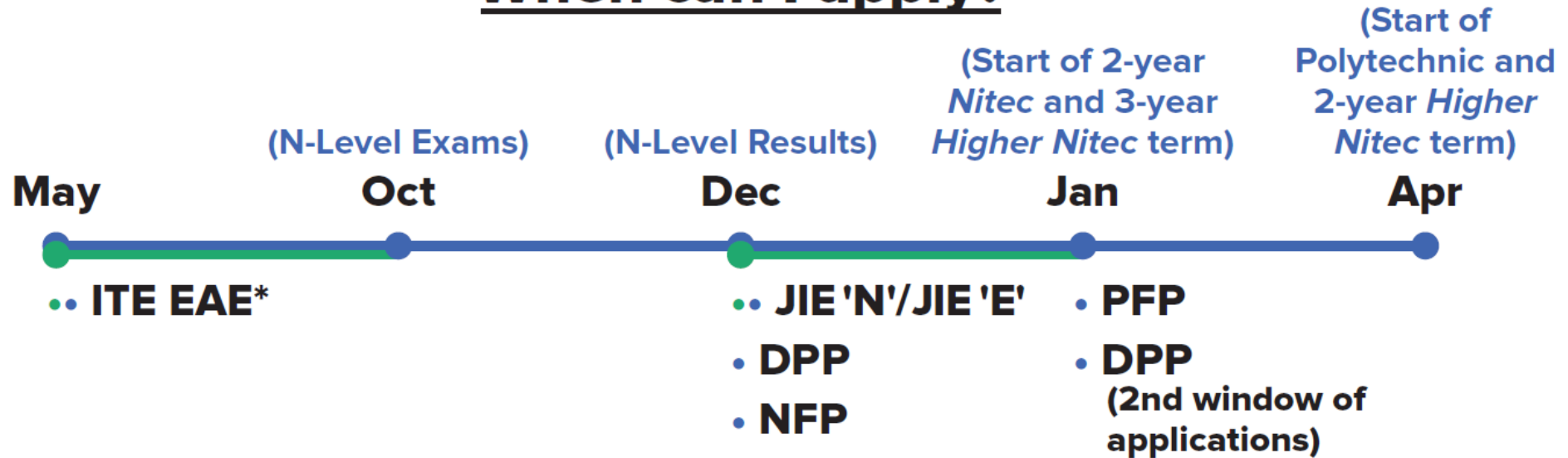
<https://www.moe.gov.sg/post-secondary/admissions>



Admissions Exercises Application Timeline



When can I apply?



*Students can apply through these admission exercises before their examinations.

**Certain *Nitec* and *Higher Nitec* courses are available in traineeship mode. For more information on applying to these courses, you can visit <https://www.ite.edu.sg/admissions/traineeship>

^ There are eleven 3-year Higher Nitec courses available for AY2022

Details of Admission Exercises (1)



ITE EAE – ITE Early Admissions Exercise

ITE EAE is an aptitude-based admissions exercise that allows students to apply and receive conditional offers for admission to ITE based on their aptitude and interest, prior to receiving their final GCE N-Level examination results. It allows students to demonstrate their aptitudes and interests apart from academic grades, thus allowing a wider range of talents to be recognised.



go.gov.sg/iteeae



JIE 'N'/JIE 'E' – Joint Intake Exercise

The JIE 'N' is for 2-year *Nitec* or 3-year *Higher Nitec* courses offered by ITE.

The JIE 'E' is for GCE N(T) students to apply for the 3-year *Nitec* course with Enhanced *Nitec* Foundation Programme.



go.gov.sg/applyjie

Details of Admission Exercises (2)

DPP – Direct-Entry-Scheme to Polytechnic Programme

DPP allows Secondary 4N(A) students to be admitted directly into a two-year *Higher Nitec* programme at ITE without having to sit for the O-Level examinations or undergo a *Nitec* programme.

DPP students who successfully complete their *Higher Nitec* courses at ITE and attain the required qualifying Grade Point Average (GPA) scores are guaranteed a place in a polytechnic diploma course mapped to their *Higher Nitec* course.



go.gov.sg/applydpp

NFP – NAFA Foundation Programme

The NFP is a full-time one-year practice-based programme targeted at N(A) students, to prepare them for the successful enrolment and completion of a diploma programme at NAFA. Students enrolled into the NFP are offered provisional places in their pre-selected diploma courses, and can progress to the first year of the course upon the successful completion of the NFP.



go.gov.sg/applynafafp

PFP – Polytechnic Foundation Programme

PFP is a one-year programme that offers a practice-oriented curriculum taught by polytechnic lecturers to better prepare polytechnic-bound N(A) students for entry into selected polytechnic diploma courses. PFP students are given provisional places in diploma programmes, subject to them passing all modules in the 1-year PFP.



go.gov.sg/pfp

JUST-IN-TIME INFORMATION ON JIE APPLICATION (JAN 2023 INTAKE)

Information For Students on Key Dates for Jan 2023 intake

1. All N(A)* /N(T) school leavers are encouraged to put in an application during the **1st Phase (Main Phase)** between **19 Dec 2022 (2.30pm) to 22 Dec 2022 (5pm)**. Application results for the 1st Phase will be released on **30 Dec 2022 at 9am**.
2. If you wish to appeal, please accept the course offered **before** applying in the **2nd Phase (Late Application/Appeal Phase)** between **30 Dec 2022 to 4 Jan 2023**. The application results for the 2nd Phase will be known on **11 Jan 2023 at 9am**.
3. Unsuccessful applicants can appeal under the **3rd Phase (Final Top-up Phase)** between **11 Jan to 19 Jan 2023 and 27 Jan to 8 Feb 2023** for courses with vacancies. The application results for the 3rd Phase will be known between **16 Jan to 27 Jan 2023** and **27 Jan to 14 Feb 2022**.

*N(A) students progressing to ITE

For further enquiries, N-Level school leavers can contact
ITE Hotline: 1800-2222-111

Key Pointers for Students on ITE's Joint Intake Exercise (JIE) for Admission to Nitec Courses

ALL N(T) students and N(A) students (who are not progressing to 5N(A) or repeating 4N(A)) are eligible for JIE.

Keen competition for Nitec and Higher Nitec courses, so use all 12 choices wisely!

Participation in Main Phase is key to secure a place in ITE!

If you are keen in the work & learn option, you may consider applying for the ITE Traineeship programme. Do apply in the Main Phase to avoid missing a place in ITE!

If you are unsuccessful in EAE, make sure you apply in Main Phase to avoid missing a place!

If you have received an additional letter, then you are eligible for the 3-year Nitec Programme (eNFP).

If you are eligible for eNFP, make sure you apply for the 2-year Nitec and 3-year Higher Nitec first before applying for eNFP!

The eNFP helps to build the necessary literacy and numeracy foundations that will enable you to successfully complete your Nitec course!




If you are counter-offered a course, accept it first before appealing for another course you may be more interested in!

STEP-BY-STEP INFORMATION FOR JIE APPLICATION

Online Application for

2-Year Nitec and 3-Year
Higher Nitec Courses

3-Year Nitec Course with eNFP
(for N(T) courses with 0, 1 pass)

1. Go to https://www.ite.edu.sg .	
2. Click  icon.	
3. Under JIE 'N', click  icon to link to the application website	Under JIE 'E', click  icon to link to the application website
4. At the application website: <ol style="list-style-type: none"> Enter NRIC / FIN and Date of Birth to start application. You may also apply using SingPass. Upon completion of application, applicants will receive their web ID and password. 	

STEP-BY-STEP INFORMATION FOR JIE APPLICATION

Checking of Posting Results/Accept Course Offer

2-Year Nitec and 3-Year
Higher Nitec Courses

3-Year Nitec Course with eNFP
(for N(T) courses with 0, 1 pass)

1. Go to <https://istudent.ite.edu.sg>.
2. Enter **web ID** and password.
3. Click '**Self-Service**' followed by '**Student Admission**' followed by '**View Application Results**' to view the application results and to accept course offer.

The above steps applies to all phases (refer to Slide 9 for dates).
For more details, please refer to ITE Admission Booklet.

Polytechnic Foundation Programme (PFP)

- Diploma-specific foundation programme conducted over two academic semesters at the polytechnics by polytechnic staff.
- Students who successfully complete the PFP will progress to the first year of their chosen diploma course in the same polytechnic.
- Following the release of the GCE O- Level results in **January 2023**, all **PFP-eligible students** may submit their applications online via the PFP portal at https://pfp.polytechnic.edu.sg/PFP/pfp_application.html
- For more information, refer to: <https://pfp.polytechnic.edu.sg/PFP/index.html>

Polytechnic Foundation Programme (PFP)

Eligibility Criteria:

- obtained **ELMAB3 ≤ 12 points** (excluding CCA bonus points).

Students must also meet the subject-specific entry requirements stated in

https://pfp.polytechnic.edu.sg/PFP/pfp_eligibility.html

DES-to-Polytechnic Programme (DPP)

- Students who accept their DPP offers will enrol directly into two-year Higher Nitec courses at ITE.
- DPP students who successfully complete their Higher Nitec courses and attain the minimum qualifying Grade Point Average (GPA) are subsequently guaranteed a place in a **polytechnic diploma course mapped to their Higher Nitec course**.
- All DPP-eligible students may submit an application online via the ITE website (<https://www.ite.edu.sg>).
- Successful applicants will be required to attend a 10-week preparatory course prior to commencing their Higher Nitec courses.

DES-to-Polytechnic Programme (DPP)

- Eligibility criteria:
obtained **ELMAB3 ≤ 19 points** (excluding CCA bonus points),
- Students must also meet subject-specific entry requirements for each course, as stated in <https://www.ite.edu.sg/admissions/full-time-courses/higher-nitec-dpp>
- For more information, refer to <https://www.ite.edu.sg/admissions/full-time-courses/higher-nitec-dpp>

Offers for PFP and DPP

- Students who offer a mix of N- and O-level subjects are allowed to combine both sets of results for computation of ELMAB3.
- CCA bonus points are not factored into the ELMAB3 aggregate used for application to the PFP, but are taken into account for posting.

Application for PFP Only

- Students who are interested in applying to the PFP should first progress to Secondary 5N(A) on 3 Jan 2023.
- Upon the release of the **2022 GCE 'O'-Level results** in January 2023, eligible N(A) students will be invited to apply for the PFP.
- Applications for the PFP will commence after the release of the GCE 'O'-Level results, at the same time as the annual Joint Admissions Exercise (JAE).
- Application results will be released by end-January 2023. Students should only withdraw from Secondary 5N(A) **after they have accepted a PFP offer**. (**All PFP-bound students are required to attend classes up until the last Friday of January, i.e. 27 Jan).

Application for DPP Only

- Upon the release of the 2022 GCE 'N'-Level results, eligible Sec 4N(A) students can apply to the DPP via the ITE application portal (<https://www.ite.edu.sg>).
- Applications for the DPP will commence after the release of the GCE 'N'-Level results and will open from **Mon, 19 Dec 2022, 2.30 pm to Thu, 22 Dec 2022, 5 pm**.
- Application results will be released via the ITE application portal at **2 pm on Fri, 23 Dec 2022**.
- Successful applicants **are required to log on to the portal to accept/reject the DPP offer.**

Application for **both** PFP and DPP

- **If you are certain that you do not want to continue in Sec 5N(A) to pursue the GCE O-Levels**, you may apply for the DPP in December. Upon the release of the GCE O-Level results in January, eligible students may apply for the PFP. If you are offered and accept a PFP place, you may withdraw from the DPP.

Alternatively,

- You may progress to Sec 5N(A) first. Upon release of the GCE O-Level results in January, you may then apply for the PFP and DPP concurrently. If application is successful, you may withdraw from sec 5N(A) by end January.

Students with confirmed ITE EAE offers

Students with **confirmed ITE EAE** offers are expected to honour their offers. They are not allowed to apply for *Nitec* courses at JIE.

Please note that students with **confirmed ITE EAE offers for *Nitec* courses** are still allowed to apply for the Polytechnic Foundation Programme (PFP) and the Direct-Entry-Scheme to Polytechnic Programme (DPP) if they qualify.

Key Dates for Jan 2023 Intake Exercise (Full-time Nitec Courses)

Key Activity	Period for 2-Year and 3-Year Nitec Courses, and 3-Year Higher Nitec courses	Remarks
1st Phase (Main Phase)		
Application	19 Dec 2022 (2.30pm) to 22 Dec 2022 (5pm)	Apply through the Internet at https://www.ite.edu.sg with NRIC / FIN and Date of Birth. You may also apply using SingPass.
Release of Results	30 Dec 2022 at 9am	Check results at https://istudent.ite.edu.sg with web ID and password
Acceptance of Course Offer Period	30 Dec 2022 to 4 Jan 2023	Accept course offer at https://istudent.ite.edu.sg with web ID and password
2nd Phase (Late Application/Appeal Phase)		
Application	30 Dec 2022 to 4 Jan 2023	Apply through the Internet at https://istudent.ite.edu.sg with NRIC / FIN and Date of Birth. You may also apply using SingPass.
Release of Results	11 Jan 2023 at 9am	Check results at https://istudent.ite.edu.sg with web ID and password
Acceptance of Course Offer Period	11 Jan 2023 to 13 Jan 2023	Accept course offer at https://istudent.ite.edu.sg with web ID and password
3rd Phase (Final Top-up Phase)		
Application	1 st Top-up Phase Application - 11 Jan to 19 Jan 2023 2 nd Top-up Phase Application - 27 Jan to 8 Feb 2023	Apply through the Internet at https://istudent.ite.edu.sg with NRIC / FIN and Date of Birth. You may also apply using SingPass.
Release of Results	1 st Top-up Phase - 16 Jan to 27 Jan 2023 2 nd Top-up Phase - 27 Jan to 14 Feb 2023	Check results at https://istudent.ite.edu.sg with web ID and password
Acceptance of Course Offer Period	1 st Top-up Phase - 16 Jan to 27 Jan 2023 2 nd Top-up Phase - 27 Jan to 14 Feb 2023	Accept course offer at https://istudent.ite.edu.sg with web ID and password

Jan 2023 Intake Term Commencement Date: **9 Jan 2023**

Promotion to Sec 5N(A)

Sec 4N(A) students can be promoted to Sec 5N(A) if they satisfy **all** the following criteria:

- (a) ELMAB3 (English Language, Mathematics and best three other subjects) aggregate score of **19 points or less**; and
- (b) At least an N(A)-Level Grade 5 for all subjects used in the computation of ELMAB3

*** Note: Students who took “O” Level subjects may compute the ELMAB3 score using a combination of N-Level grade and Prelim results to determine eligibility for promotion/detention. This applies to the DPP points calculation as well.**

Conversion of Prelim grade to N(A)-level grade

School O-level Prelim Exam Grade	N(A)-level Grade
A1, A2, B3	1
B4, C5, C6	2
D7, E8	3
F9	4

* F9 grade cannot be used to compute for DPP eligibility.

Retention at Sec 4N(A)

Sec 4N(A) students are eligible to repeat their GCE N(A)-Level Examination if they satisfy **all** the following criteria:

- (a) Obtain an aggregate score:
 - i) Not exceeding 21 points for ELMAB3 (i.e. $ELMAB3 \leq 21$), or
 - ii) Not exceeding 14 points for ELB3 (English Language and best three other subjects, which can include Mathematics) (i.e. $ELB3 \leq 14$), or
 - iii) Not exceeding 14 points for MAB3 (Mathematics and best three other subjects, which can include English Language) (i.e. $MAB3 \leq 14$); and

Retention at Sec 4N(A)

(b) Will not be more than:

- i) 4 years overage, for Singapore Citizens/ Permanent Residents (i.e. born on or after 2 Jan 2003), or
- ii) 2 years overage, for International Students (i.e. born on or after 2 Jan 2005); and

(c) Sat for the GCE N(A)-Level Examination for the first time in 2022.

Administrative Matters – Application for 5N(A) / 4N(A)

- Students who would like to apply to Sec 5N(A), please fill up the form via the link below **by 12 noon, Fri 23 December 2022 and report for school at 7.20 am on 3 January 2023.**
<https://form.gov.sg/639a7fcddc10fc00116166cb>
- Students who would like to apply to repeat Sec 4N(A), please fill up the form via the link below **by 12 noon, Fri 23 December 2022.**
<https://form.gov.sg/639a84a8dc10fc001162049c>

Administrative Matters - Documents to receive from FTs

1. GCE N(A)/N(T) Level Result Slip
2. GCE N(A)/N(T) Level Certificate
3. Form N - Admission to ITE
4. Admission Booklet for Jan 2023 intake
5. ITE Traineeship & DPP Brochure

Administrative Matters – Result Slips and Certificate

- Candidates are to check that your personal particulars (such as statutory names and Hanyu Pinyin names) are correct on your result slips and certificates.
- Report any mistakes to the office staff by **Thu, 22 Dec 2022**.

Administrative Matters – Appeal for Review of Results

- Candidates who do not have strong grounds for appeal should not do so.
- Cost per appeal per subject: \$112.35
- Collect application form, get endorsement from subject HODs and submit to the school by **Thu 22 December 2022**.

Things to note:

- Fees arrears (school fees, library book fines, etc.)
 - Please pay before collecting results.
- You may proceed to Computer Room 4 to do online application from **Mon 19 Dec 2022 (till 5pm) to 5pm on Thu 22 Dec 2022.**

All the Best!

OFFICIAL (CLOSED) \ NON-SENSITIVE DIRECT-ENTRY-SCHEME TO POLYTECHNIC PROGRAMME (DPP)

5 Things You Need to Know

1. What is the DPP?

- Prepares Sec 4N(A) students for progression into selected polytechnic diploma courses via a 2-year *Higher Nitec* programme at ITE, and a 10-week DPP preparatory course
 - Serves as an alternative to Sec 5
- Students who attain required *Higher Nitec* GPA scores are guaranteed a place in one of the polytechnic diploma courses mapped to the *Higher Nitec* course. (Refer to <https://www.ite.edu.sg/admissions/full-time-courses/higher-nitec-dpp> for course mapping.)
- About 1,200 places offered across 18 *Higher Nitec* courses

2. Am I Eligible for DPP 2023?

- Sec 4N(A) student who has sat for GCE N-Level exams in 2022
- Obtained ELMAB3 aggregate of 19 points or less (before deduction of CCA bonus points)
- Meet subject-specific entry requirements
- ✔ **If you can check all 3 boxes above, you're eligible!**
(Note: Being eligible to apply does not guarantee you a place in a DPP *Higher Nitec* course.)

If you have offered GCE O-Level examination subjects in 2022, you may refer to this table for the equivalent grade to compute your ELMAB3 aggregate:

GCE O-Level Grade	Converted Grade
A1-B3	1
B4-C6	2
D7-E8	3

3. How do I Apply?

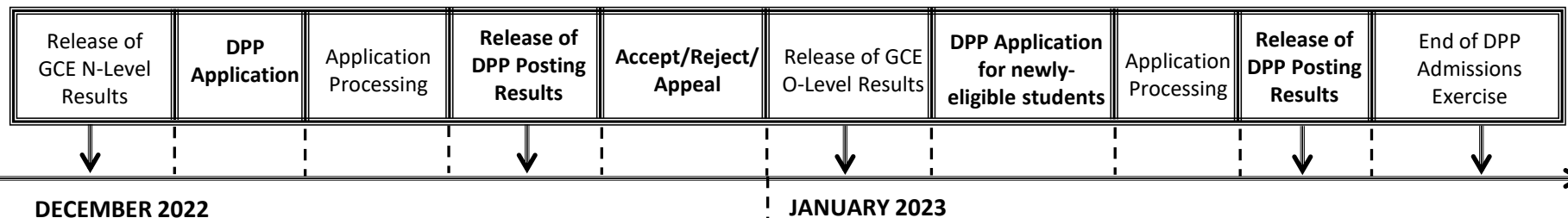
- Upon release of the GCE N-Level results, all DPP-eligible students may apply for DPP *Higher Nitec* courses via the ITE website (<https://www.ite.edu.sg>).
- You may select up to 12 course choices.
- Remember to provide updated contact details in your application to allow ITE to contact you if necessary.

4. How Will I be Informed of the Outcome?

- You should check your DPP posting results online on the morning of the release of the DPP posting results.
- You will then have to indicate if you wish to accept/reject/appeal the offer.
- If you do not accept the offer by the stipulated date, it will become void and you will be required to continue with your classes in Sec 5 or with your *Nitec* or 3-year *Higher Nitec* course if your application via JIE 'N' is successful

5. What Happens Next?

Upon accepting your DPP offer, you will attend a 10-week DPP preparatory programme that will start in Jan 2023.



OFFICIAL (CLOSED) \ NON-SENSITIVE POLYTECHNIC FOUNDATION PROGRAMME (PFP)

Essential Things You Need to Know

1. What is the PFP?

- A foundation year at the polytechnics that:
 - Prepares well-performing Sec 4N(A) students for progression into respective polytechnic diploma courses
 - Serves as an alternative to Sec 5
- Conducted over two academic semesters at the polytechnics
- Students must pass all PFP modules in order to progress to their respective, pre-selected diploma courses.

2. Am I Eligible for PFP 2023?

- You are eligible for the PFP if you:
- Sat for GCE N-Level exams as a school candidate in 2022
 - Have obtained an ELMAB3 aggregate of 12 points or less (before deduction of CCA bonus points)
 - Met course-specific entry requirements as listed on the PFP website

If you can check all 3 boxes above, you're eligible!
(Note: Eligibility does not guarantee you a place in a PFP course)

If you had offered GCE O-Level examination subjects in 2022, you may refer to this table for the equivalent grade to compute your ELMAB3 aggregate:

GCE 'O' Level Grade	Converted Grade
A1-B3	1
B4-C6	2
D7	3

3. How do I Apply?

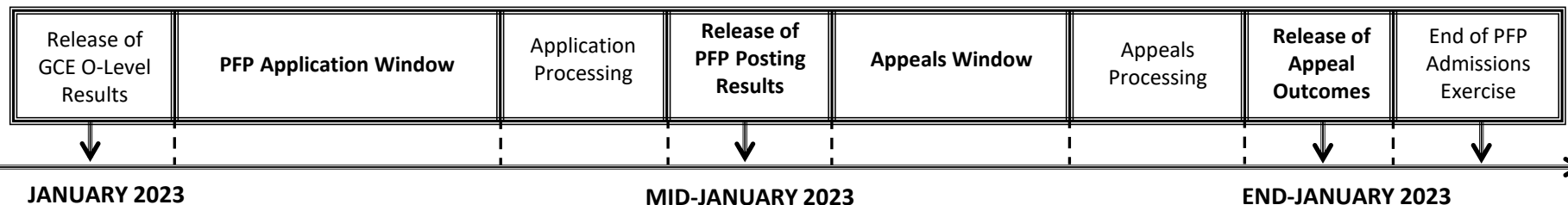
- Upon release of the GCE O-Level results, all PFP-eligible students will receive Form P containing a PFP PIN that allows them to apply for the PFP at this [link](#).
- You may select up to five course choices.
- Remember to provide updated contact details in your application to allow the polytechnics to contact you if necessary.
(Note: You should continue to attend Sec 5 from 3 January 2023 while applying for PFP.)

4. How Will I be Informed of the Outcome?

- You should log in to the PFP portal to check your application outcomes on the day of PFP posting results release.
- You will then have to indicate if you wish to accept/reject/appeal the offer.
- If you do not select any option, your offer will become invalid and you will be required to continue with your classes in Sec 5.
(Note: If your appeal is successful, your original offer will be void regardless of whether you accept the new PFP offer.)

5. What Happens Next?

- If you accept your offer, you will receive an enrolment package from the polytechnics in February/March 2023.
- The PFP year will start in April 2023.





Ministry of Education
SINGAPORE