



# Welcome Back!



Class of 2023



Resilient . Integrity . Compassion . Humility

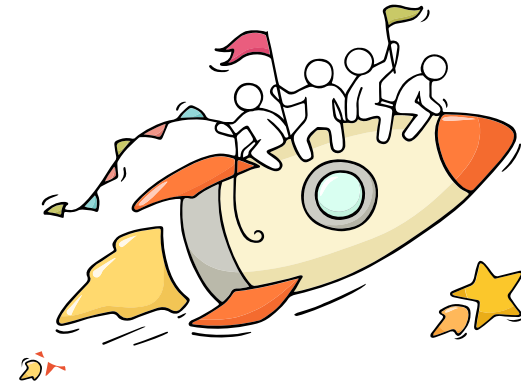


# Celebrate Efforts

The O-Level is a culmination of years of hard work and perseverance.

**Let's celebrate our efforts regardless of the results.**

Let's mark the end of the academic year by reflecting together on all our previous successes in school and the challenges we have overcome!

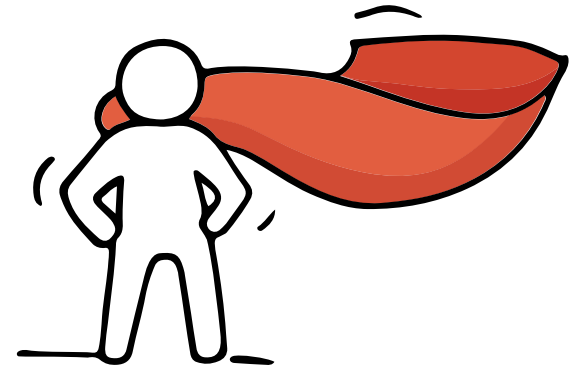




# Think Opportunities

- As you await your GCE O-Level results, there are some possibilities:
  - You are happy that your results meet your expectations,
  - You are overjoyed that your results exceed your expectations, or
  - You are worried/upset because your results fall short of your expectations.

*Many pathways and opportunities!*



Remember that **everyone's learning journey is different** but **we can each have a fulfilling outcome!**



# Thinking about Your Next Step?

Consider these questions!

Where do I want to go?

Who am I?



How Do I Get There?

# Resources to help you make informed decisions

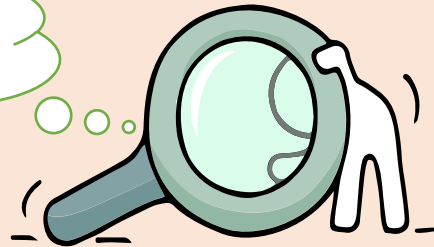


## MySkillsFuture Student Portal

A one-stop portal that empowers you to embark on a journey of self-discovery and make informed education and career choices.

Use the information and tools to explore various education and career pathways and take charge of your future.

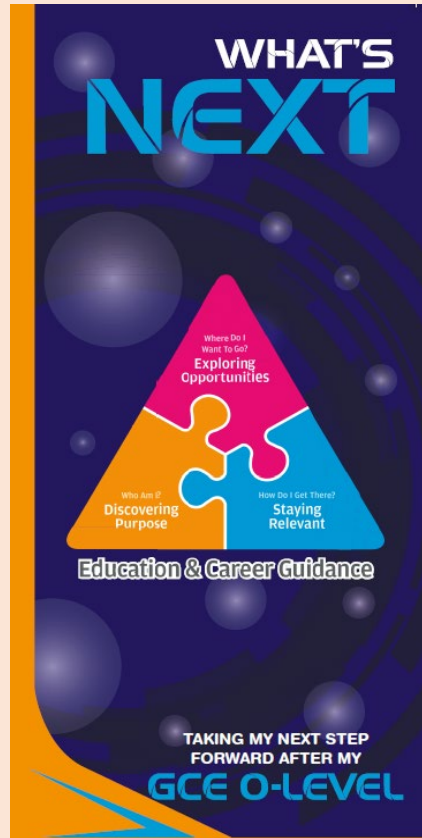
*Where can we  
find more  
information?*



<https://go.gov.sg/mySFse>  
c



# Resources to help you make informed decisions



<https://go.gov.sg/whats-next-olevel>

# Resources to help you make informed decisions

## Information on Post-Secondary Education

Learn more about the admissions exercises and programmes



<https://moe.gov.sg/post-secondary/admissions>

Learn more about the post-secondary education institutions



<https://moe.gov.sg/post-secondary/overview>

# Resources to help you make informed decisions

Explore different jobs and industries with On My Way (OMW). Find out if your career goal and educational pathway match your interests, values and ambitions. <https://www.nyc.gov.sg/omw/home>



## KNOW IT ALL

provides consolidated information about different jobs and industries - key responsibilities, skills, career paths and more!



## A Day in the Life of a Food Technologist

## DAY IN THE LIFE

takes you into the lives of different professionals and give you a glimpse of their jobs and what it entails through the medium of videos.

A micro-job taster experience by Bold AT Work x Outward Bound Singapore

### Where Outdoors is a Calling

Curious to sample an alternative career transforming lives and journeying alongside youths in the outdoors? Discover skills, roles, culture, career opportunities and pathways within Outward Bound Singapore in this intentionally curated half-day session, before you decide if you'd like to commit to the Instruction Selection Process.

**8 Nov 2023**  
**8AM to 1 PM**

Punggol Point Jetty  
Singapore 828694  
OBIS Camp 1, Pulau Ubin

Co-organised by:                 

In Partnership with: 

## TASTER PROGRAMMES

are micro-experiences of different job roles that allow you to get a taste of working life and help you decide what to study to achieve your career aspirations!







# Concerned About Your Next Step?

Stop

- Calm yourself down. Take a few deep breaths.

Think


- Think through the different options that are available for you. Keep things in perspective.
- Remember that the O-Level is one part of your life journey and not the destination.

Do

- Approach a trusted adult and seek his/her help. Have a conversation with this person about what would be best for you.
- Make a decision and take action based on your options.

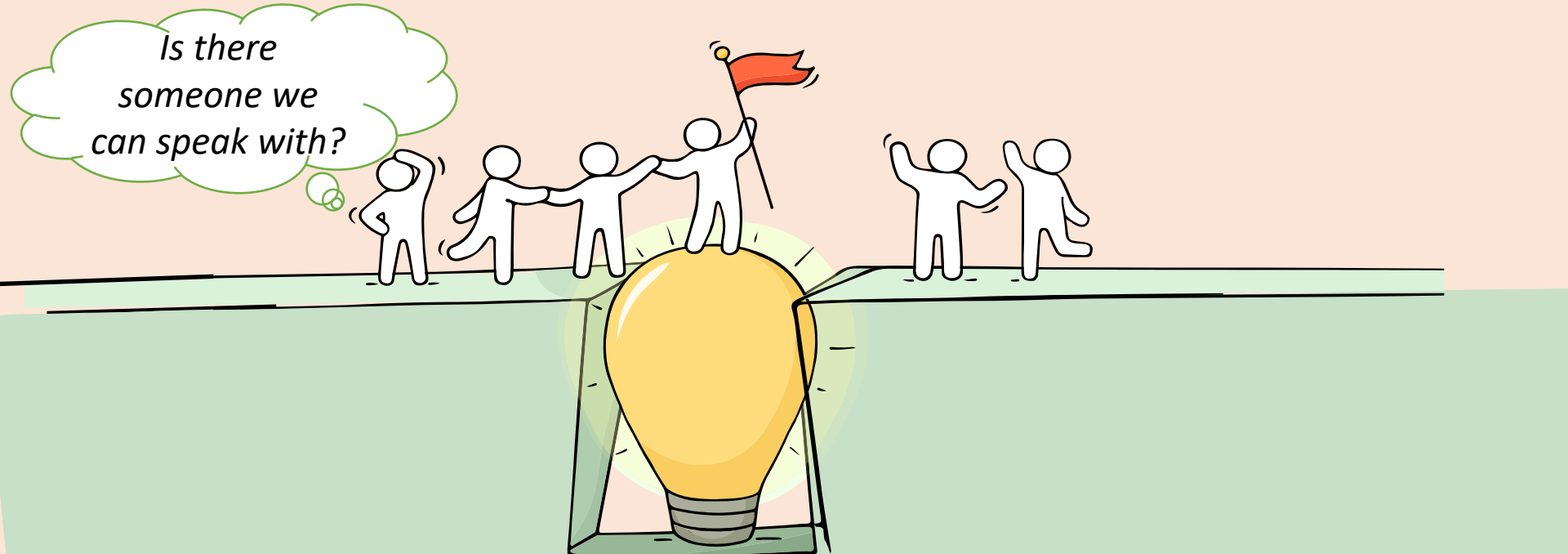
When you receive your results, you may experience a range of emotions.

Managing these emotions well will allow you to stay calm and make rational decisions.



# Reaching out for help is a sign of strength, not weakness.

If you have any questions about your options or are not coping well, do reach out to someone you trust and speak with them. It could be a parent/guardian, teacher, ECG Counsellor, School Counsellor or a friend whom you can talk to.



*Is there  
someone we  
can speak with?*

# Support is readily available for you.

**Reach out to an ECG Counsellor!**

*Who can we go  
to for ECG  
advice?*

Make an appointment to speak  
with your ECG Counsellor in school.

**OR**

Make an ECG counselling  
appointment via the  
ECG Centre @ MOE (Grange Road)  
at

<https://go.gov.sg/moe-ecg-centre>



Keep a lookout for some of these signs in your peers or yourself.

*How can we support one another?*



**D**

Deliberately avoiding others

**I**

Increased irritability, restlessness, agitation, stress and anxiety

**S**

Sending or posting moody messages on social media

**T**

Talking about death or dying

**R**

Reacting differently or gradually losing interest in things they used to like

**E**

Eating more than usual or having a much reduced appetite

**S**

Sleep pattern changes with difficulty falling asleep or oversleeping

**S**

Slowing down of energy levels

If you notice any of these signs in yourself or your friends, **have a chat with your school counsellor or teacher**  
Or contact SOS 24-hour hotline at **1-767** or **1800-221-4444**



Ministry of Education  
Singapore

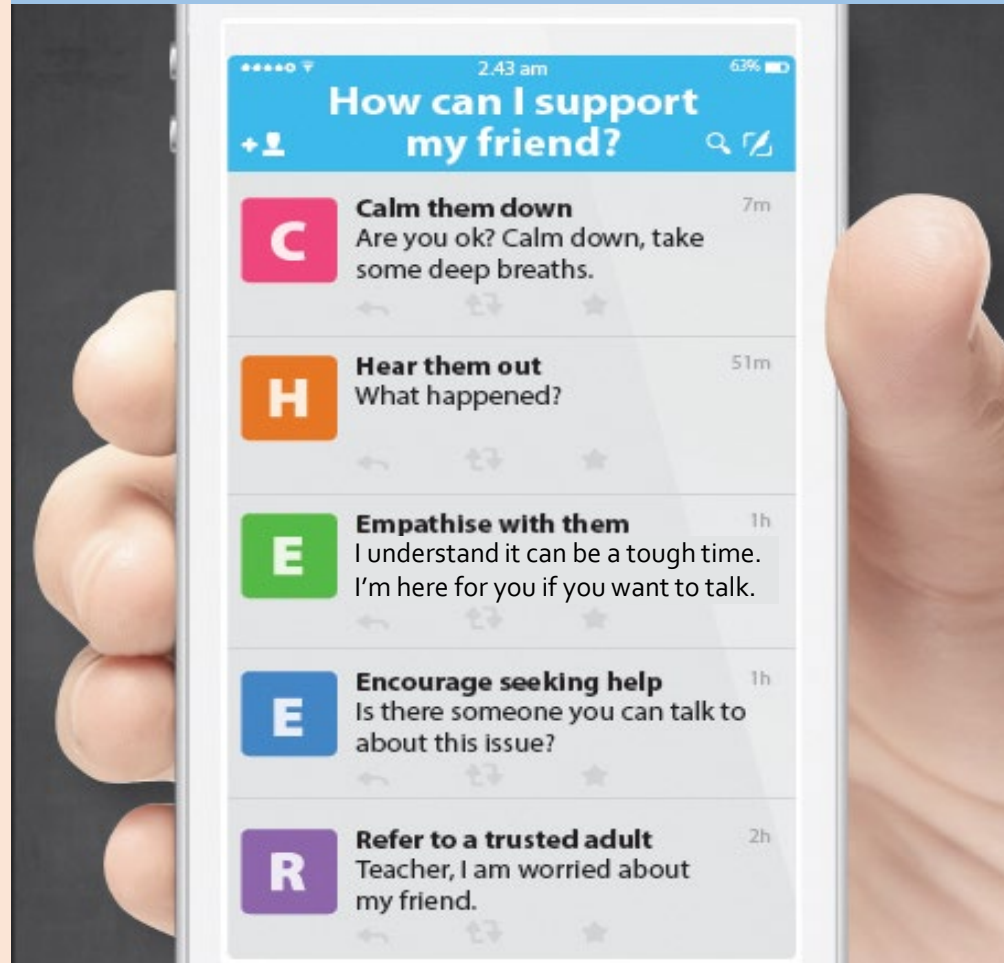
© 2021 Guidance Branch, Student Development Curriculum Division (SDCD), Ministry of Education, Singapore. No part of this final product may be reproduced or transmitted in any form or by any means, electronic or mechanical, including photocopy, recording or any other information storage and retrieval system, without written permission from SDCCD, MOE.

# Supporting Your Friend

We may each experience different emotions upon receiving the results. You can share your friends' joy by congratulating them or give words of encouragement to friends who may be disappointed with their results.



Keep a lookout for your friends in distress. You can support them in the following ways:



# Support is readily available for you.

There are other hotlines and chats available if you are more comfortable seeking help using these platforms. Scan the QR code below for a helpful resource.



**SOS** provides round-the-clock emotional support for those in distress, thinking of suicide or affected by suicide.

Call: **1767**  
(24-hour helpline)

Whatsapp: **9151 1767**  
(24-hour Care Text)

**TOUCHline** is a helpline to provide youths with emotional support and practical advice.

Call: **1800-377 2252**  
Monday- Friday (Excluding Public Holidays):  
9am – 6pm

**Community Health Assessment Team (CHAT)** provides personalised and confidential mental health checks and consultation for youths. To speak with a youth support worker, you can:

Visit: **CHAT Hub at \*SCAPE, #05-05**  
Call: **6493 6500/ 6501**  
Email: **CHAT@mentalhealth.sg**

**Carey** is an online platform by Care Corner that provides free mental health check-ins with mental health professionals. Find out more at:  
<https://carey.carecorner.org.sg/>

**mindline.sg** is an online platform that provides tools, tips and resources to help you manage your health and well-being. Find out more at:  
[www.mindline.sg](http://www.mindline.sg)

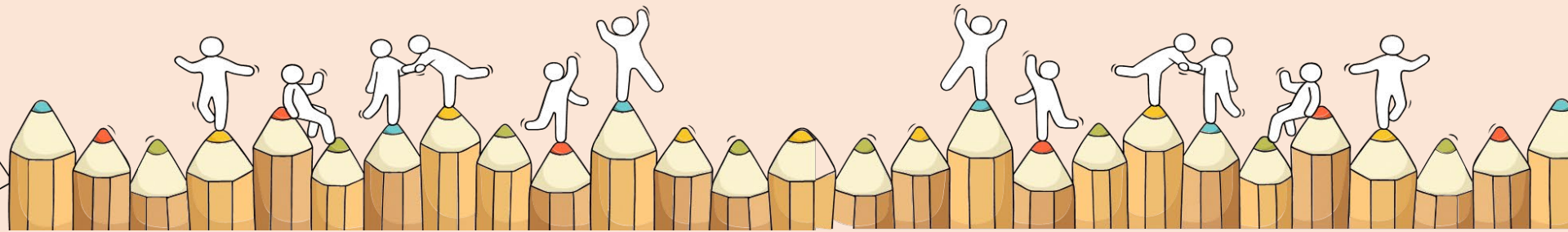


**eC2** is an e-Counselling Centre where you can talk to a trained counsellor about the issues you are facing, right where you are.

Chat with a counsellor at:  
[www.ec2.sg](http://www.ec2.sg)  
Monday – Friday (Excluding Public Holidays):  
10am – 12pm & 2pm – 5pm

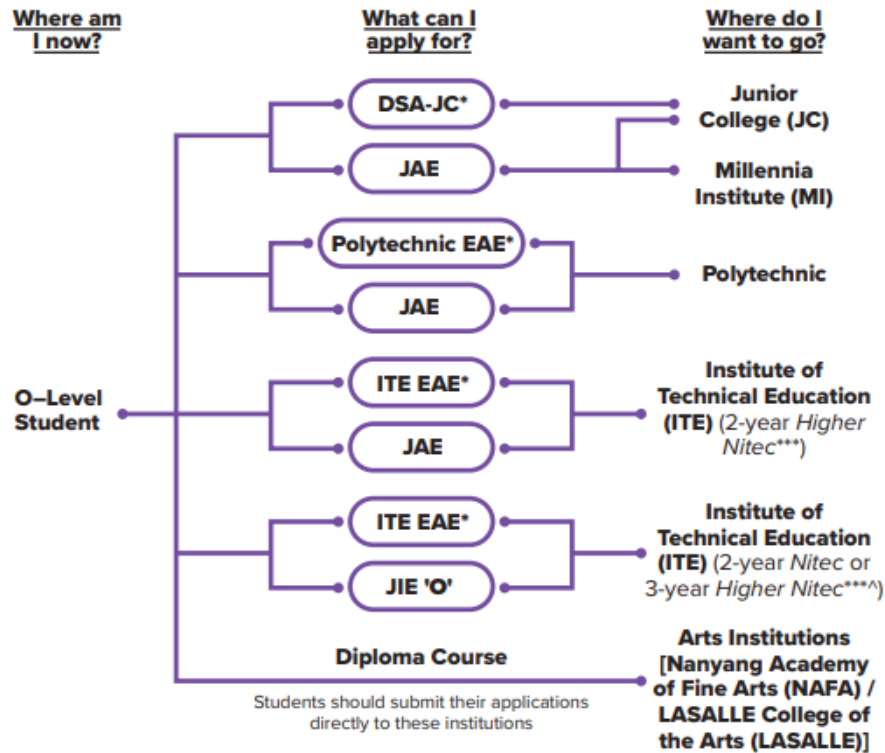
# Admissions Exercises

## Things to note





## Admissions Exercises for O-Level Students



<https://www.moe.gov.sg/post-secondary/admissions>

\*Students can apply through these admissions exercises before their O-Level examinations.

\*\*\*Selected *Nitec* and *Higher Nitec* courses are available in traineeship mode. For more information on applying to these courses, you can visit

<https://ite.edu.sg/admissions/traineeship>.

^For the list of 3-year Higher Nitec courses, please visit <https://www.ite.edu.sg/courses/full-time-courses/nitec-and-3-year-higher-nitec> .

Source: A Guide to Post-Secondary Admissions Exercises



# Admissions Exercises Application Timeline



**(O-Level Exams)**

**(After release of O-Level Results)**

**Oct/ Nov**

**Jan**

**LASALLE\***

**JAE**

**NAFA\***

**JIE 'O'**

\*Application to LASALLE's and NAFA's diploma programmes starts from October.

# Details of Admissions Exercises



## JAE – Joint Admissions Exercise

JAE enables GCE O-Level holders to apply for admissions to courses offered by JCs, MI, polytechnics and ITE 2-year *Higher Nitec*.



[go.gov.sg/applyjae](https://go.gov.sg/applyjae)



## JIE 'O' – Joint Intake Exercise 'O'

The JIE 'O' is conducted to enable GCE O-Level holders to apply for the 2-year *Nitec* or 3-year *Higher Nitec* courses conducted by ITE.



[go.gov.sg/applyjie](https://go.gov.sg/applyjie)

# Details of Admissions Exercises



## **Arts Institutions – NAFA/ LASALLE**

GCE O-Level holders with the aptitude and interest to pursue the creative arts at the tertiary level may apply for diploma programmes at the Arts Institutions (AIs). Each AI runs its own admissions exercise, and interested students should apply directly to the institution.

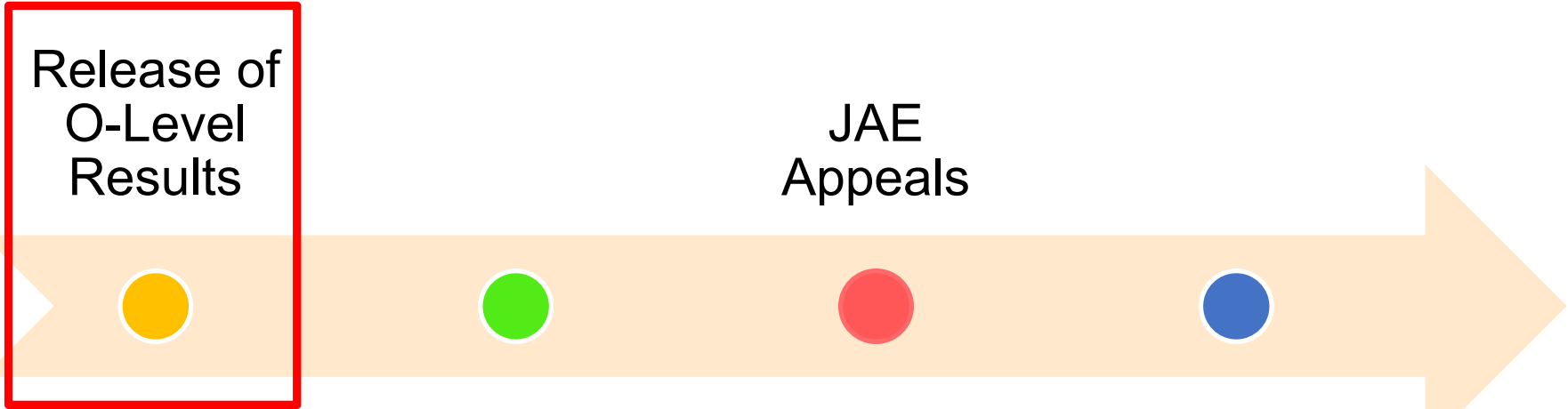


[go.gov.sg/nafa-applynow](https://go.gov.sg/nafa-applynow)



[go.gov.sg/laselle-applynow](https://go.gov.sg/laselle-applynow)

# Release of O-Level Results



Release of  
O-Level  
Results

JAE  
Appeals

Joint  
Admissions  
Exercise  
(JAE)

After JAE  
Appeals





# Release of Results

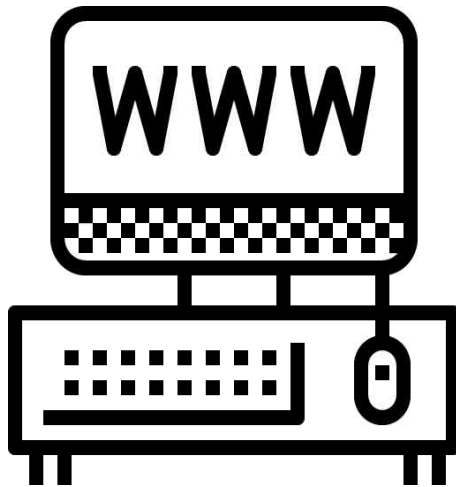


Eligible school candidates will receive a digital copy of Form A1 via their registered email addresses from **2.00pm on Thursday, 11 January 2024.**

All students eligible for JAE may also download a copy of Form A from the JAE-Internet System (JAE-IS) during the application period.

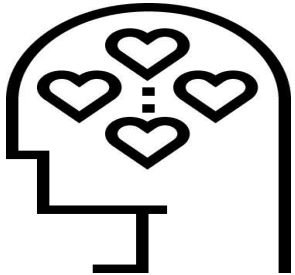
The JAE-IS will be accessible from **4.00pm on Thursday, 11 January 2024, to 4.00pm on Tuesday, 16 January 2024** for applicants to submit their course choices through the JAE website at [www.moe.gov.sg/jae](http://www.moe.gov.sg/jae).



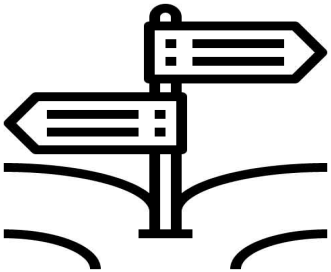


- **Which courses should I choose?**
  - Use all your 12 JAE choices carefully
  - Refer to the polytechnic and ITE websites to find out more
  - For polytechnic and ITE 2-year Higher Nitec courses:  
<https://moe.gov.sg/coursefinder>





- **What am I good at? Are there areas that I am interested in?**
  - Think about type of courses you have strengths and are interested in
  - For example, you may be interested in engineering, healthcare or design courses



- **Where should I go?**
  - List down all the institutions that offer courses that are aligned to your interests
  - For example, if you are interested in design, you could list down the design courses offered by the polytechnics, such as the Diploma in Immersive Media, offered by NP or Diploma in Sonic Arts, offered by RP. You can also consider courses offered by ITE such as the 2-year Higher Nitec in Interactive Design or the 2-year Higher Nitec in Visual Effects.

## Joint Admissions Exercise (JAE)

You should complete the **JAE Worksheet** before accessing the JAE-IS to register your course choices. Completion of the JAE Worksheet will enable applicants to register more smoothly online.

**Print and retain a copy** of the Verification Slip for your record after you have submitted your application online.







# What you need to do:

Complete the Worksheet before accessing the JAE-IS to submit your application.

Sample of Form A (Page 2)

## 20XX JOINT ADMISSIONS EXERCISE WORKSHEET

This JAE worksheet is provided to assist you before you do your online course registration.

### (A) Personal Particulars

Please fill in your personal particulars and update them as necessary in the online system.

NRIC/FIN : \_\_\_\_\_  
Name : \_\_\_\_\_  
Mobile Number\* : \_\_\_\_\_  
Contact Number : \_\_\_\_\_  
Email Address : \_\_\_\_\_

\*Your posting result will be sent via SMS to a valid Singapore mobile number.

### (B) Course Preference

You are only allowed to specify courses that you are eligible for, up to a maximum of 12 courses.

You are strongly advised to make full use of the 12 choices, where applicable.

Please refer to your Form A and Information Booklet for course eligibility details.

Choice Order	Course Code
1 <sup>st</sup>	
2 <sup>nd</sup>	
3 <sup>rd</sup>	
4 <sup>th</sup>	
5 <sup>th</sup>	
6 <sup>th</sup>	

Choice Order	Course Code
7 <sup>th</sup>	
8 <sup>th</sup>	
9 <sup>th</sup>	
10 <sup>th</sup>	
11 <sup>th</sup>	
12 <sup>th</sup>	

**Print and retain a copy** of the Verification Slip for your record after you have submitted your application online.



# Joint Admissions Exercise (JAE)

Release of  
O-Level  
Results

JAE  
Appeals

After JAE  
Appeals

Joint  
Admissions  
Exercise  
(JAE)





# JAE-IS

- Students are strongly encouraged to use the JAE worksheet ([www.moe.gov.sg/jaeworksheet](http://www.moe.gov.sg/jaeworksheet)) before submitting their online application.
- The JAE-IS can be accessed using Singpass.
- Students can find more information on the following MOE websites:
  1. JAE website for more details on the JAE ([www.moe.gov.sg/jae](http://www.moe.gov.sg/jae))
  2. SchoolFinder for details of the offerings by and previous entry score ranges for JCs and MI ([www.moe.gov.sg/schoolfinder](http://www.moe.gov.sg/schoolfinder))
  3. CourseFinder for courses offered by the polytechnics and ITE, based on aggregate type and area of interest ([www.moe.gov.sg/coursefinder](http://www.moe.gov.sg/coursefinder))



## Joint Admissions Exercise (JAE)



- You can also refer to the JAE website for details on the courses offered, including information on the subject-specific minimum entry requirements (MERs), and the net aggregate range for the previous JAE for specific courses in the year before
- For additional advice, you can approach your school teachers, ECG counsellor and parents, or visit the ECG centre at MOE Grange Road (<https://go.gov.sg/moe-ecg-centre>)



OFFICAL (CLOSED) \ NON-SENSITIVE

# Post-Secondary Education



Explore education institutions using *Education Guide* on the MySkillsFuture Student Portal.

<https://go.gov.sg/explorepostsec>



Find out more about how others have made informed decisions on their education and career journeys.

<https://go.gov.sg/next-step-forward>

# JAE Appeals

Release of  
O-Level  
Results



JAE  
Appeals



Joint  
Admissions  
Exercise  
(JAE)

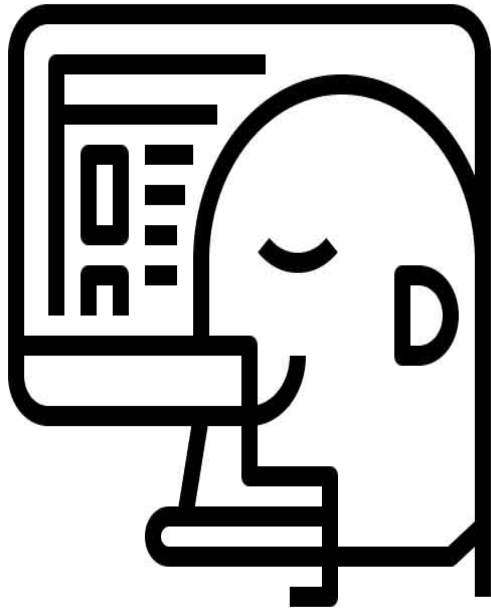
After JAE  
Appeals





- **Which courses should I appeal for?**
  - You can only appeal for courses where you meet the current year's cut-off point, as well as the MERs (**Minimum Entry Requirements**)
  - Refer to the JAE appeals website for information on the net aggregate range for the previous JAE for specific courses for the current year
  - Refer to the JAE booklet for information on the subject-specific MERs on courses that you are interested to appeal
  - Think about appealing for a range of courses, including those offered by ITE





- **How do I appeal for a course?**
  - Submit your appeal through the JAE appeals website:  
<https://jaeappeal.edu.sg>
  - Use all your 6 JAE appeals choices carefully
  - For additional advice, you can approach your school teachers, ECG counsellor and parents, or visit the ECG centre at MOE Grange Road (<https://go.gov.sg/moe-ecg-centre>)





# After JAE Appeals

Release of  
O-Level  
Results

JAE  
Appeals



Joint  
Admissions  
Exercise  
(JAE)

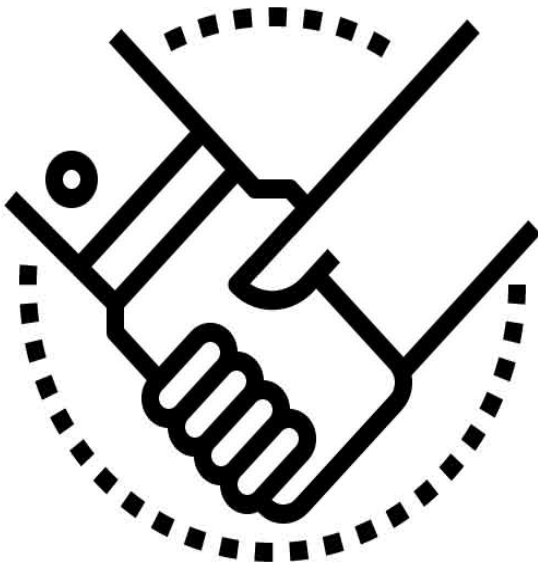
After JAE  
Appeals





- **How do I check for my JAE appeals outcome?**
  - You will be informed of your appeal outcome through the online appeals portal, as well as through SMS notifications
  - Look out for your appeal outcome, and consider the course you were posted to carefully
  - If you did not receive a posting by the end of JAE appeals, you will be offered an alternative course as an additional option
  - If you are offered an alternative posting, do accept it and give it a try, as it will give you a chance to continue your studies





- **Can I still appeal after the end of JAE appeals?**
- You can still appeal directly to the polytechnics and ITE for courses that you are interested in
- You can do this even if you have accepted the posting offered through JAE appeals



OFFICAL (CLOSED) \ NON-SENSITIVE

# All the Best!



# **Additional Information – Certificate Amendment Request**

Students may request for a re-print of their current exam year certificate only if their name has been printed wrongly due to misspelling. There is an administrative fee of S\$50.00 (inclusive of GST) for the amendment of each GCE O-Level certificate.

School must email the certificate amendment requests to [seab\\_cs\\_admin@seab.gov.sg](mailto:seab_cs_admin@seab.gov.sg) by Wednesday, 17 January 2024. Each request will be reviewed and is subject to approval.

Any requests received after 17 January 2024 will not be considered.