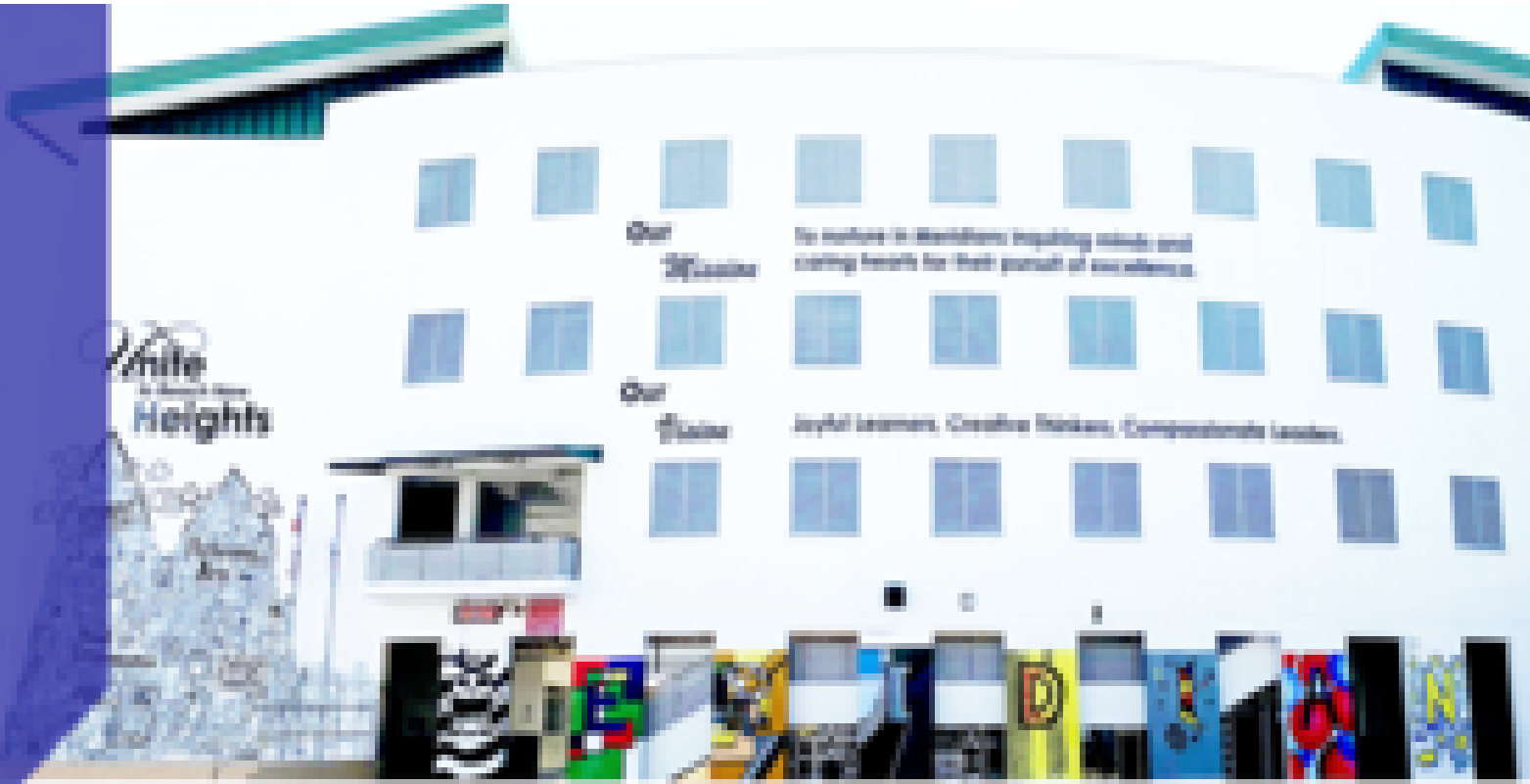


DSA – The Meridian Way

by
DON'T JUDGE
EACH DAY BY
THE HARVEST
YOU REAP BUT
BY THE SEEDS
THAT YOU
PLANT.

— Robert Louis Stevenson



Our
Culture
To nurture in Meridian: Inquiring minds and
rising needs for their pursuit of excellence.

Our
Class
Joyful learners, Creative thinkers, Compassionate leaders.

OFFICIAL (OPEN) / NON-SENSITIVE



meridian_sec



meridiansec



meridiansec.moe.edu.sg

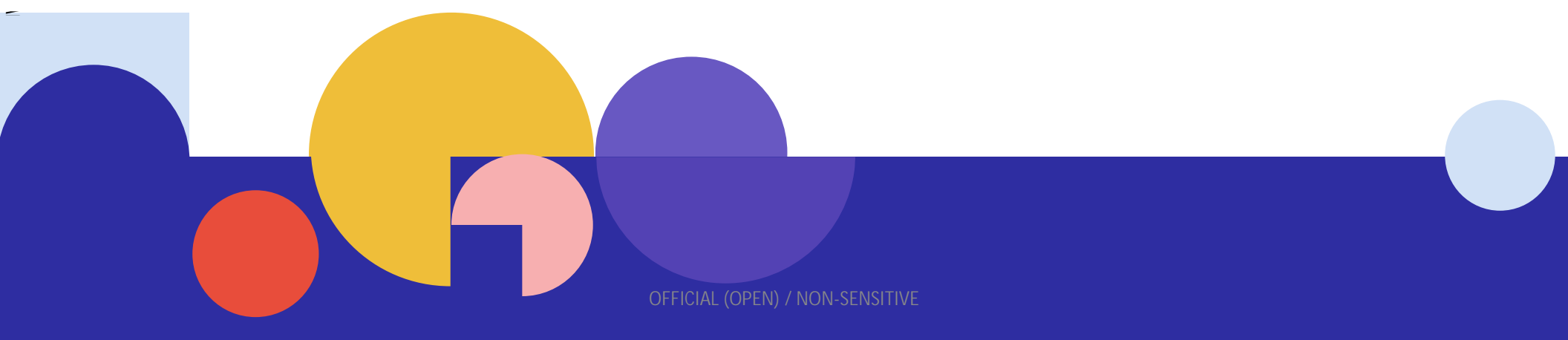
Direct School Admission

To provide students with the opportunity to seek admission to a secondary school, based on a diverse range of **specific academic and non-academic achievements and talents** that they can demonstrate beyond the PSLE.

To allow students to **better access school programmes** to grow their talents and interests.

Participation in DSA-Sec is **optional**. P6 students not participating in DSA-Sec will participate in Secondary 1 (S1) Posting and be posted to secondary schools based on their PSLE results.

Is Meridian Right For Me?



OFFICIAL (OPEN) / NON-SENSITIVE

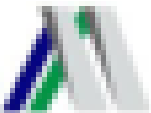
Is the school right for me?



Look for a school whose purpose and programmes match your **interests and talents**.

Get the latest information about what each school offers by:

- Visiting MOE's DSA website
 - Visiting school's website
- Successful DSA applicants **will not be allowed** to participate in the Sec 1 Posting Exercise, and is expected to honour the commitment to the allocated DSA-Sec school for the entire duration of the programme.
- Successful DSA applicants **will also not be allowed to transfer** to another school after the release of the PSLE results.



Joyful Learners

who are motivated and engaged in learning.

Creative Thinkers

who can innovate and solve problems.

Compassionate Leaders

who can empathise with and support others.

School Vision School Mission

To nurture in Meridians inquiring minds, and caring hearts for their pursuit of excellence

Inquiring minds ask questions and seek answers constantly (JL, CT).

Caring hearts empathise with and take actions to improve the lives of others (CL).

Pursuit of Excellence refers to continuous efforts towards attaining one's best (JL).

**Engaged and Effective
Learners**

**Leaders of Sound Character
who Contribute Actively**

The Meridian Way

We Care. We Learn. We Innovate

Resilience. Integrity. Compassion. Humility

**Cohesive Staff Committed to
Continuous Growth**

**Collaborative Partnership
with Key Stakeholders**

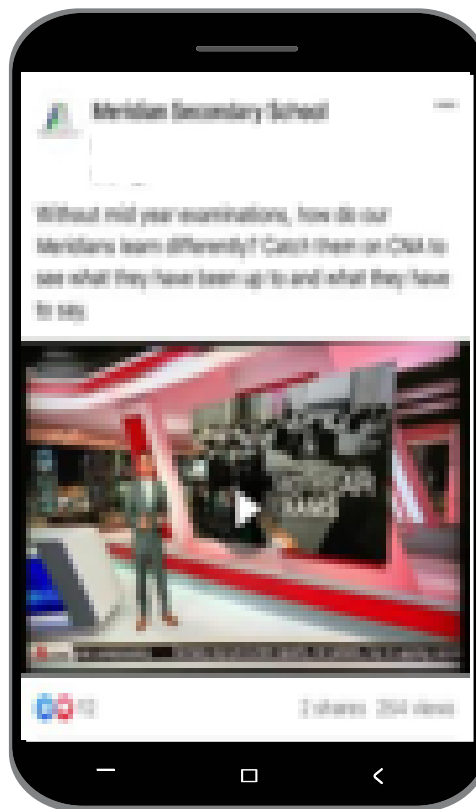
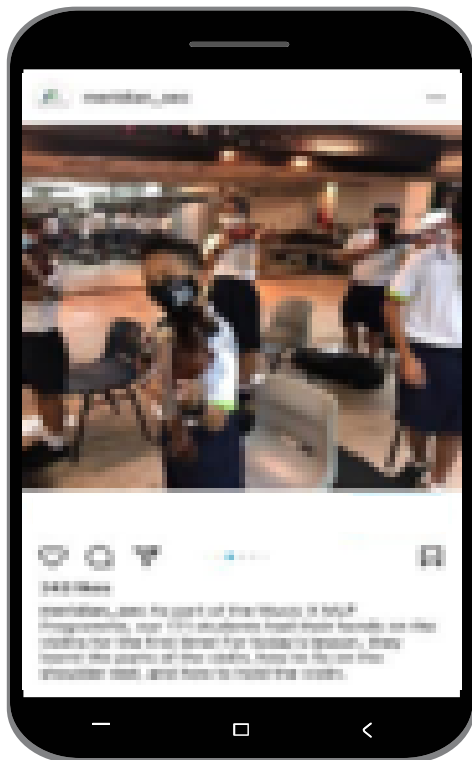
Sustainable DSA Talent Areas

- Committed Staff - almost 70% have been in Meridian Sec since 2018
- Coaches and Trainers with strong sense of belonging – since the days of Siglap/ Coral Sec, alumni
- Sports – 1 of 9 schools involved in Unleash the Roar (UTR) initiative
- Visual Arts – 1 of only 9 schools to offer the Enhanced Arts Programme

OFFICIAL (OPEN) / NON-SENSITIVE



Find out More!



Keep updated on Meridian's development and achievements.



OFFICIAL (OPEN) / NON-SENSITIVE

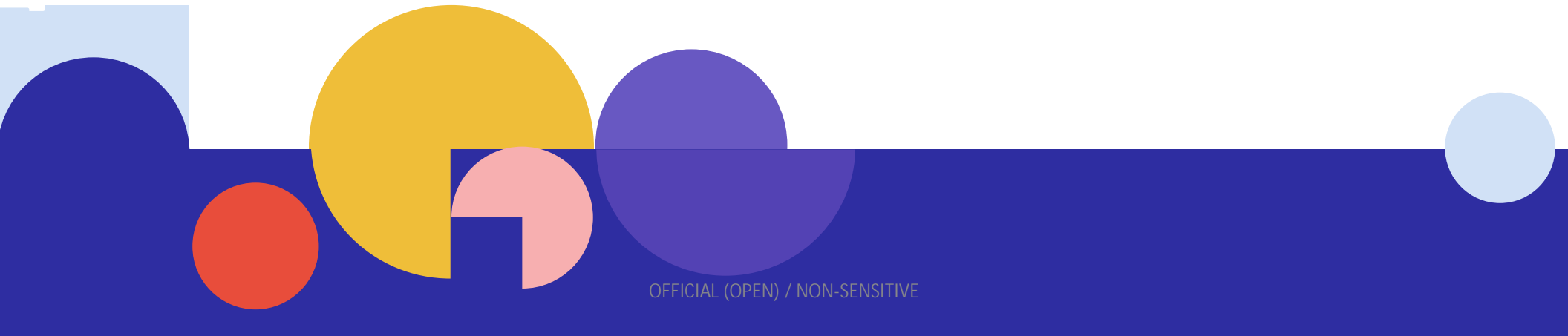


Students who are successfully admitted to the school via DSA are expected to honour their commitment to the school, and participate in the activities related to the talent they are selected throughout their secondary school years.

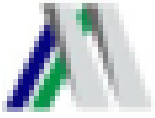
OFFICIAL (OPEN) / NON-SENSITIVE

Resilience . Integrity . Compassion . Humility

Am I ready/ right for Meridian?



OFFICIAL (OPEN) / NON-SENSITIVE



Is DSA right for me?

Yes, if you have **talent in an area** which a school offers the DSA in.

And are **passionate** about and **committed** to developing your strengths **in that area in that school**.

Parents and students are encouraged to choose schools wisely based on the student's aptitudes and strengths, bearing in mind the schools' academic and non-academic requirements, and the programmes available to develop the area of talent.

Talent

Commitment

Passion



DSA Talent Areas

Community Youth Leadership
Visual Arts
Angklung/Kulintang Ensemble
Concert Band
Modern Dance

Badminton
Basketball (Boys only)
Floorball
Football

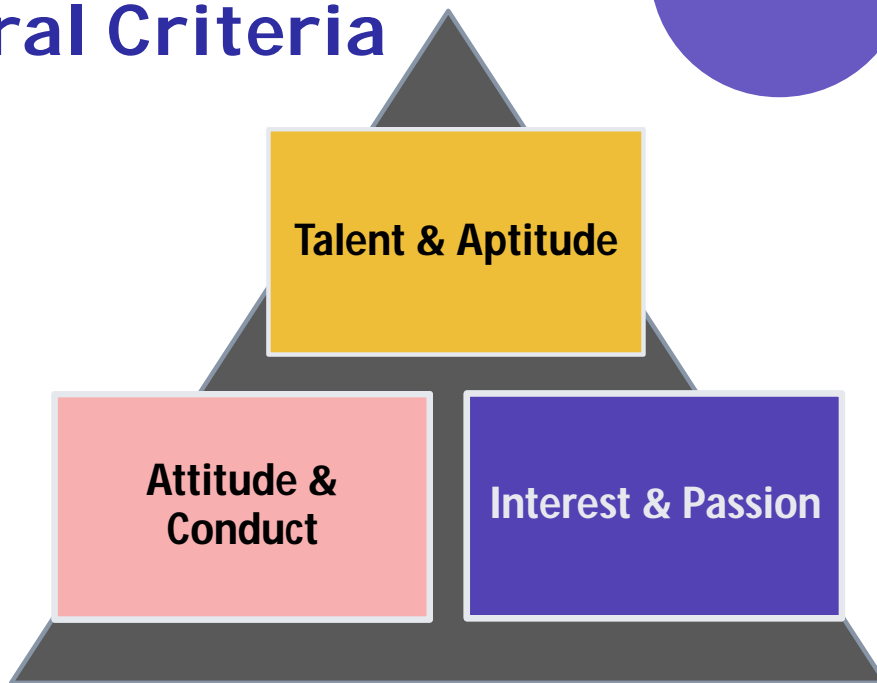
Broad-Based Exposure

OFFICIAL (OPEN) / NON-SENSITIVE

Resilience . Integrity . Compassion . Humility

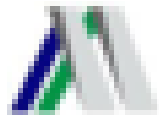


General Criteria

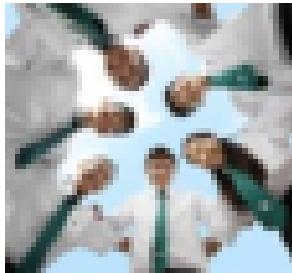


Please note that **meeting all criteria does not guarantee the student will be shortlisted/given an offer.**

Obtained a **Conduct Grade of 'Good' or better** in Primary 5 (Overall) & Primary 6 (Mid-year)



Are you Inclusive and Self-Directed?



Full Subject-Based Banding

- Mixed Form Classes
- Common Curriculum – CCE, PE, Music, Art, D&T and FCE



Personal Learning Devices (PLDs)

- Learn anywhere, anytime
- Collaborate with anyone
- Pursue Interest

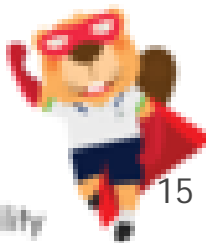


Independent Learning Day (ILD)

- Once a Fortnight
- Home-Based Learning
- Student-Initiated Learning (SIL)

OFFICIAL (OPEN) / NON-SENSITIVE

Resilience . Integrity . Compassion . Humility





Are you willing to sacrifice to be part of the team?



Shoes and Socks

- Students must wear black shoes with minimal white trimmings only.
- Shoes may or may not come with shoe laces.
- Shoe laces must either be black or white.
- Brown soles are accepted.
- High-cut shoes are not accepted.
- Students must refrain from wearing shoes that are expensive and/or fanciful.
- White socks without any markings



Guidelines on Shoes

Acceptable shoes

Examples



Unacceptable shoes

Grey coloured shoes are not allowed.



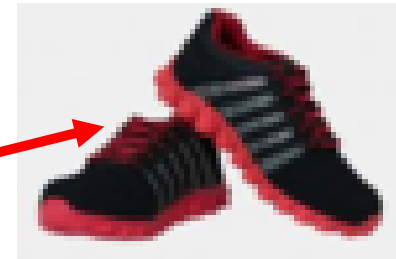
Unacceptable shoes

Fanciful design are not allowed.



Unacceptable shoes

High-cut shoes are not allowed.



Unacceptable shoes

Coloured markings/laces are not allowed



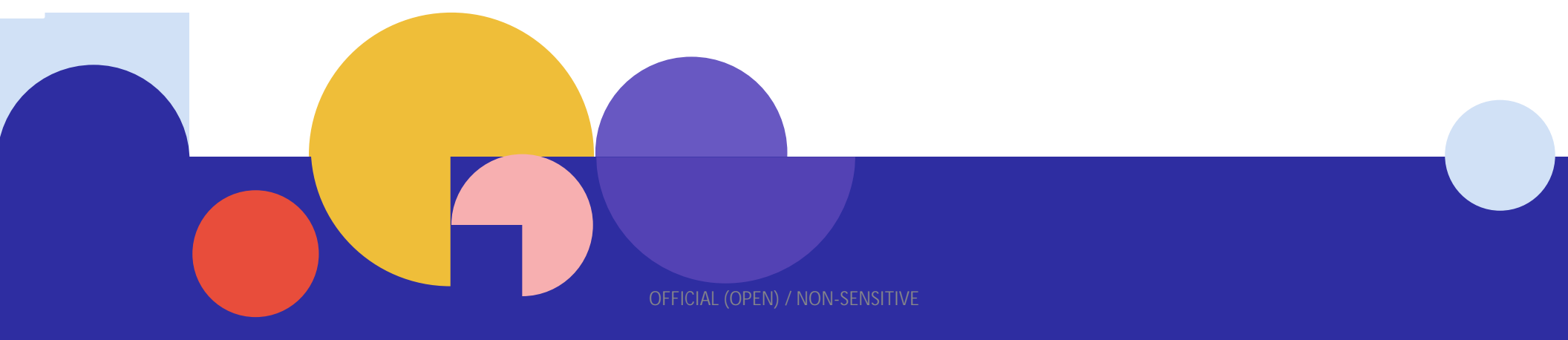


School Policy on Use of Mobile Phones and possession of other expensive items

- Students should not bring other electronic devices or expensive items to school.
- Students are **not allowed to use** mobile phones from 7.30 am till the end of curriculum time every day.
- All mobile phones should be switched off and locked away in the lockers designated to each classroom before the start of the first lesson.
- The CCTV surveillance system in the classroom blocks monitors movement of students and usage of the lockers.
- Please call the General Office at 65831387 if you need to convey urgent messages to your child.



Can I get into Meridian?



OFFICIAL (OPEN) / NON-SENSITIVE

Some FAQs

1. Is there a set number of students allocated for all the Talent Areas?

Answer: No. However, we do not fill up all available slots

2. Are other talent areas considered even when I select a specific Talent Area? For example, for Visual Arts, will my talent in piano or Dance give me an advantage/ score more points?

Answer: We adopt a holistic approach when assessing applications for the different talent area. We advise you to select the right talent area that you have **both** the passion and commitment & the talent.



Some FAQs

3. Is academic performance part of the criteria for selection?

No. Your child needs to only meet the course criteria for the different streams:

- Express – 4-20 (if 21-22, can opt for NA)
- NA – 23-24 (if 25, can opt for NT)
- NT – 26-30 (AL 7 or better for EI and Maths)
- For more info check out:

<https://www.moe.gov.sg/microsites/psle-fsbb/psle/main.html>



Some FAQs

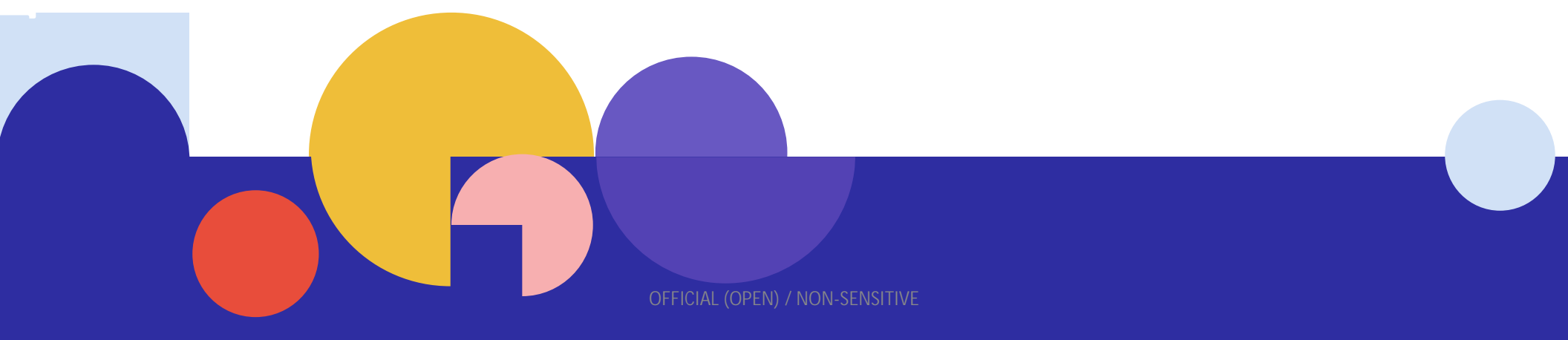
4. Will there be extra lessons for those who are not keeping up with their subjects?

Teachers will identify students who need more help and provide differentiated instruction during lessons, or more targeted strategies to develop self-regulation/ self-directed practice. Where needed, selected students will be given additional help beyond curriculum time.

These apply to all Meridian students, not just DSA



Student Voice

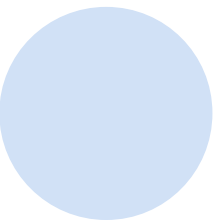


OFFICIAL (OPEN) / NON-SENSITIVE

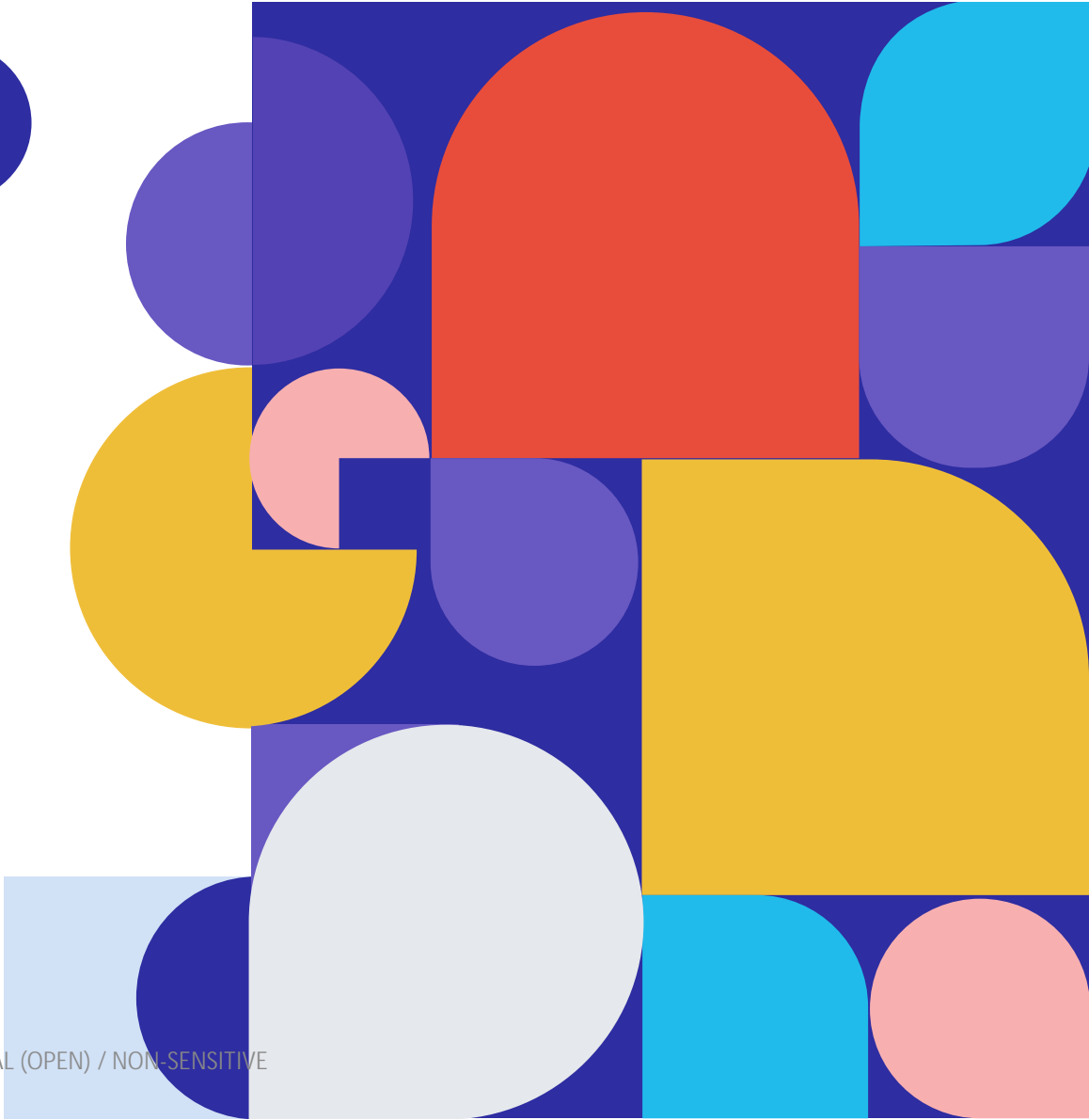


My Badminton DSA Journey to Meridian

Sharing by Hansika (1E2)



Resilience . Integrity . Compassion . **H**umility



OFFICIAL (OPEN) / NON-SENSITIVE

My DSA Experience

- Why I decided to try out for DSA at Meridian
 - Personal interest and wanted a challenge
- What I did to prepare myself
 - Practice makes perfect
 - Asked for advice
 - Watched Youtube Videos
- My feelings about the process
 - Started off anxious
 - Proud of what I had done
 - Over the moon when I was accepted

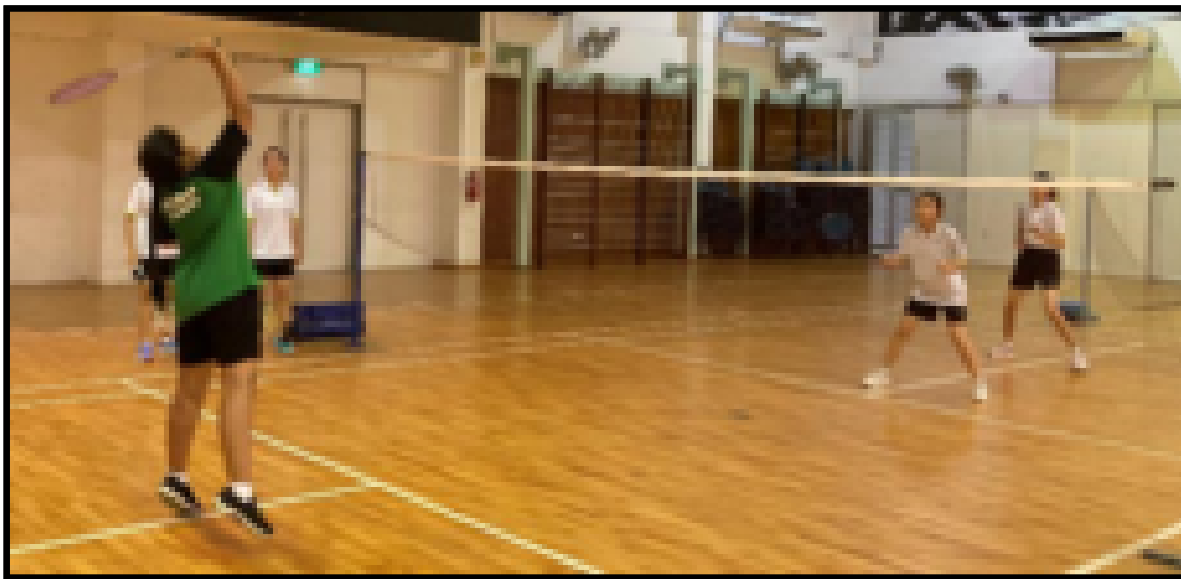


OFFICIAL (OPEN) / NON-SENSITIVE

Resilience . Integrity . Compassion . Humility

My Meridian Experience

- First day of school
- Making friends in class and at my CCA
- Lessons I had learnt during CCA



OFFICIAL (OPEN) / NON-SENSITIVE

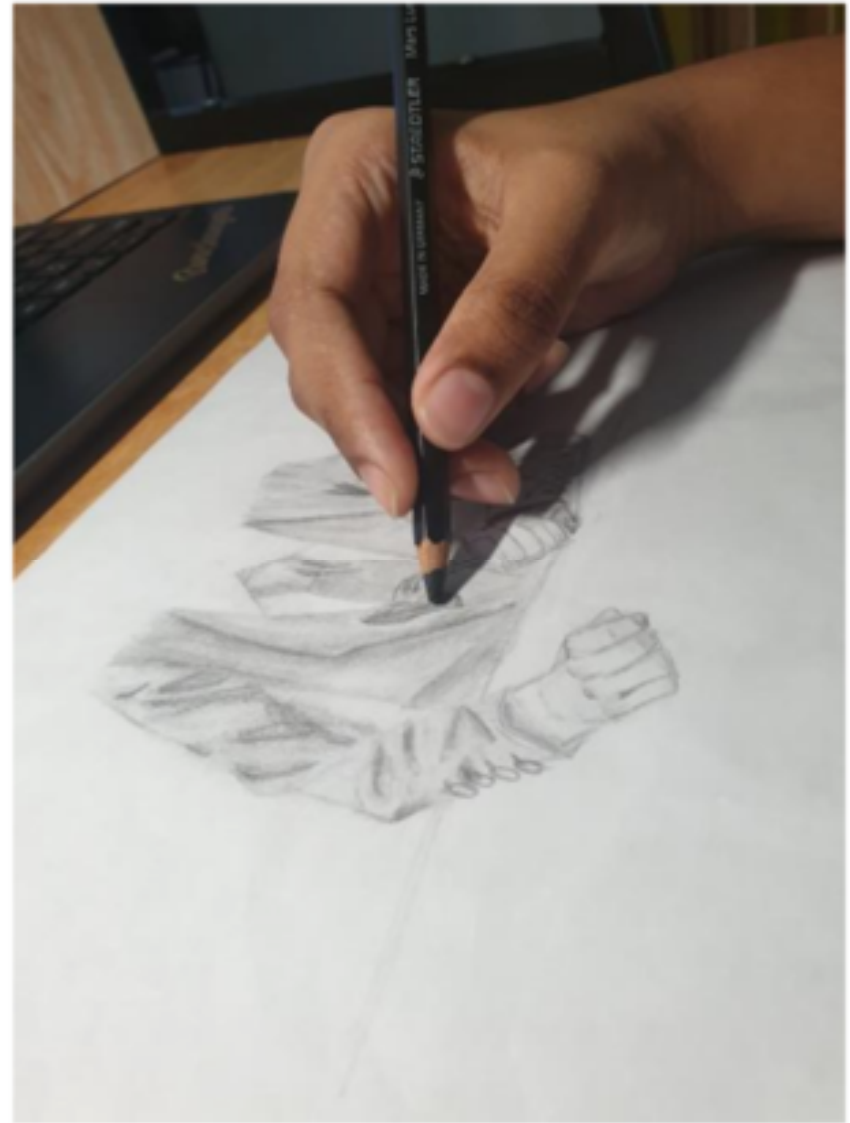
Resilience . Integrity . Compassion . Humility

My Art DSA Experience

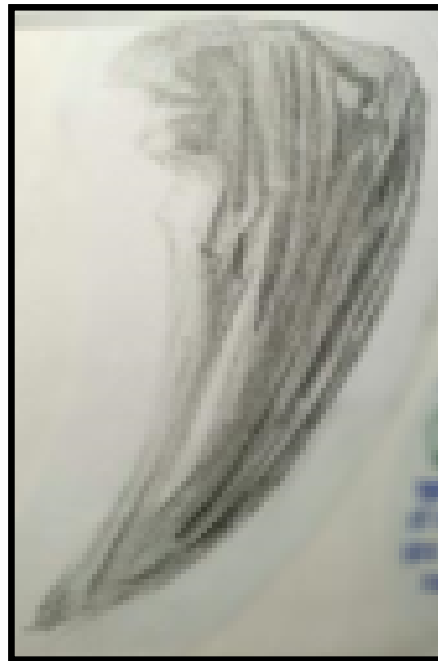
Sharing by Ruby (3E2)

OFFICIAL (OPEN) / NON-SENSITIVE

Resilience . Integrity . Compassion . **H**umility



These are some samples of my artworks before EAP

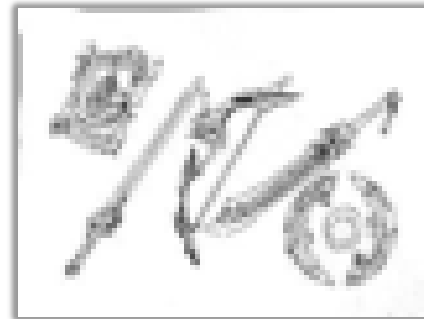


OFFICIAL (OPEN) / NON-SENSITIVE

Resilience . Integrity . Compassion . Humility

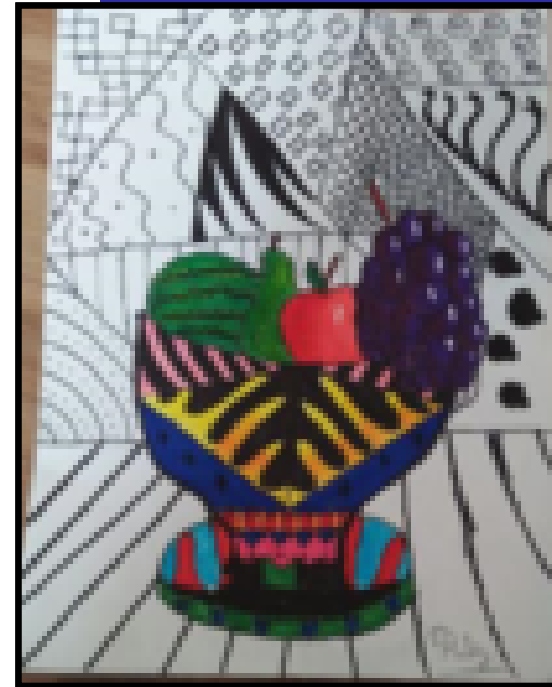
If you're wondering about DSA...

- Other students' art pieces seem to be better than mine, will I even get in or do well?
- You don't have to be the most talented artist to be able to get in!
- Your potential and willingness to improve is what matters most!
- The teachers will always be there to guide you, as long as you yourself don't give up!
- The lessons will help you to grow!

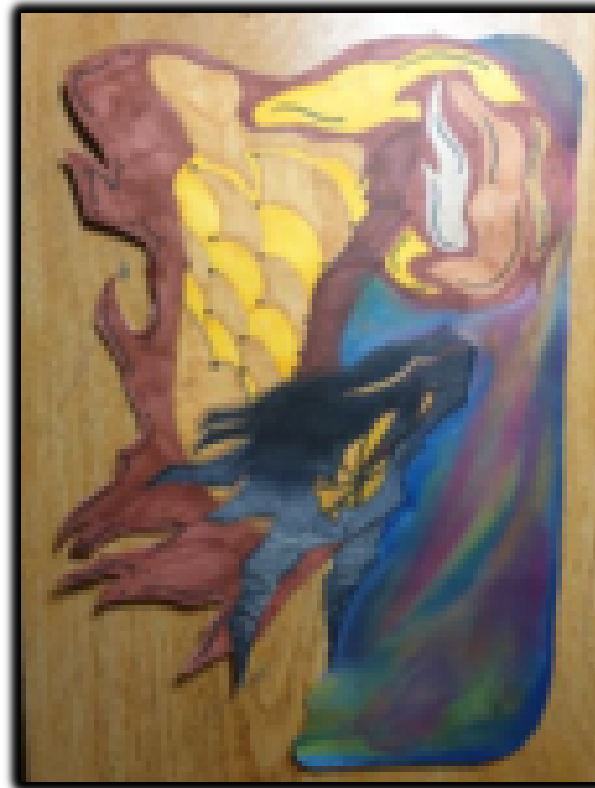
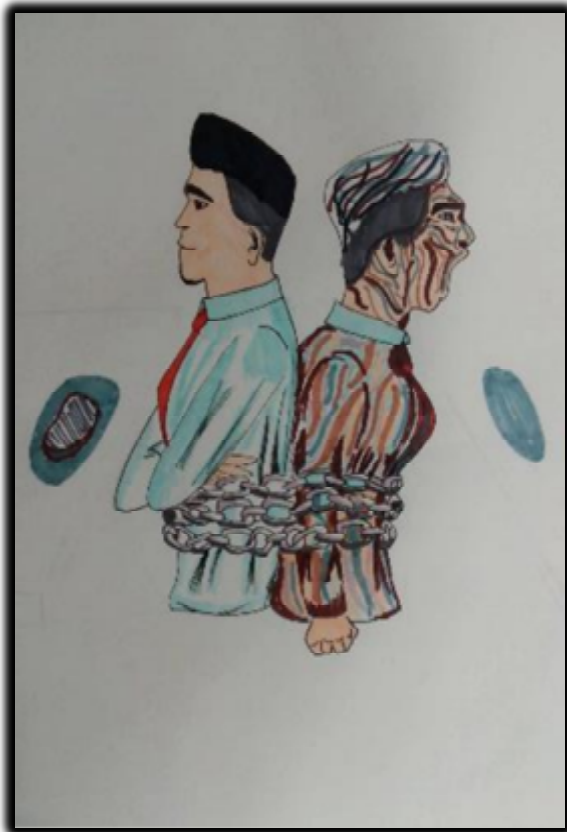


OFFICIAL (OPEN) / NON-SENSITIVE

Resilience . Integrity . Compassion . Humility



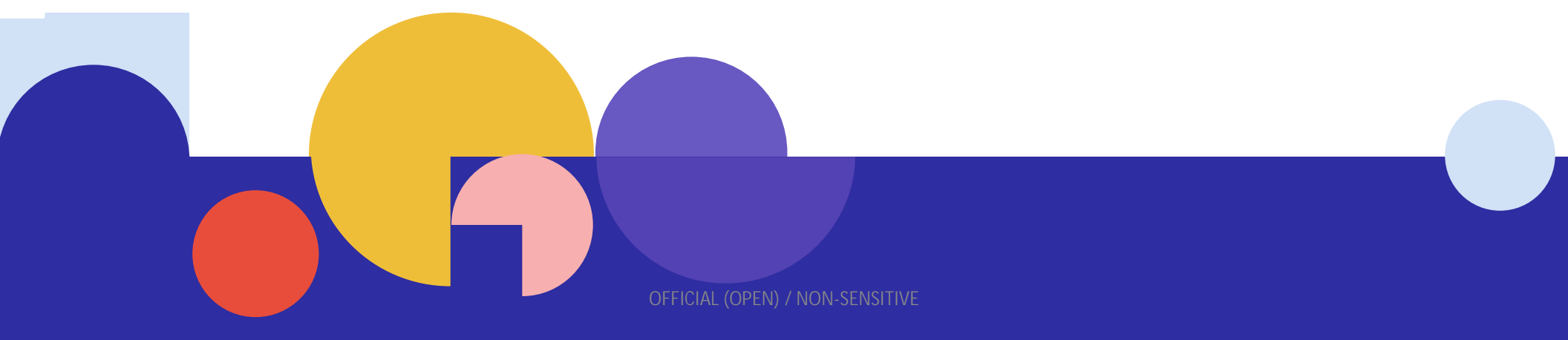
The artworks I have made after 2 years of being in the programme!



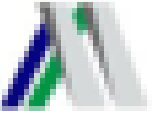
OFFICIAL (OPEN) / NON-SENSITIVE



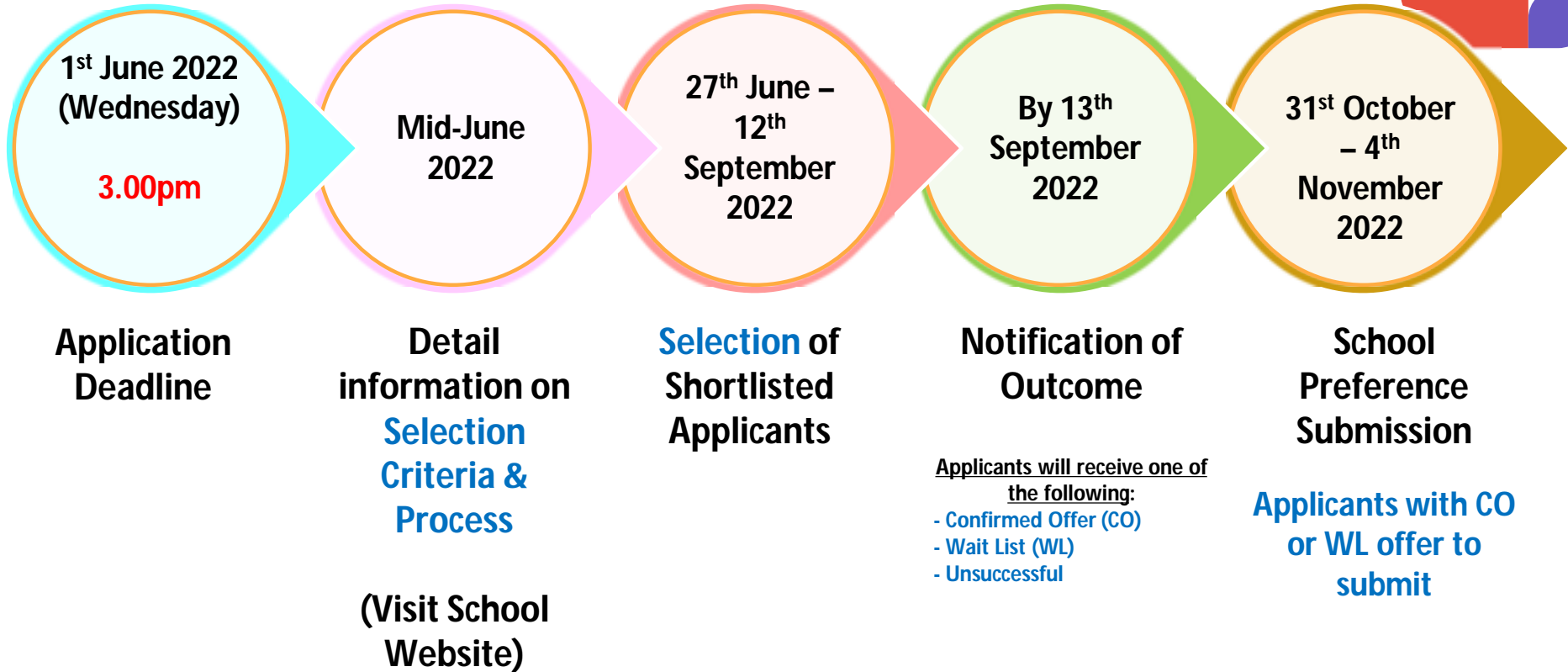
Administration & Application



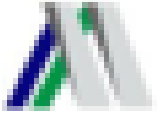
OFFICIAL (OPEN) / NON-SENSITIVE



Key Dates



DSA-Sec Allocation results will be released together with PSLE results (late Nov 2022)



Selection Process

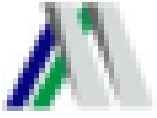


Selection process of shortlisted DSA candidates will be **in-person (face-to-face)** at DSA schools as students will be better able to demonstrate their talents (for all talent areas).

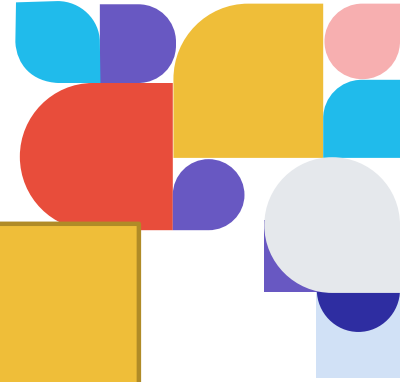
Based on prevailing **national posture** and requisite **SMMs**.

Schools may either **re-schedule in-person selection or convert in-person selection to e-mode (on an exceptional case-by-case basis)** for students **who test COVID-19 positive** during the selection period, so long as it does not affect the selection integrity.

Visit the school website from **mid-June** for updates.



Selection Process



1. Maintain hygiene and social responsibility

- Students to bring TT token/ App.
- Applicants screened to ensure that they are well before DSA selection.
(*Re-schedule selection for applicants who are feeling unwell or are within the isolation period)
- Make use of personal equipment whenever possible.

2. Safe distancing & Mask Wearing

Ensure safe distancing and wearing of masks (based on prevailing SMMs and Guidelines).

3. Capacity limit

Aligned to prevailing group size or venue capacity.



Submission of Application

MOE website: www.moe.gov.sg/dsa-sec

Login to DSA Portal via parent's Singpass or apply through primary school.

Applicant can apply up to **3 choices**.

Max of 2 choices for the same school (under 2 different talent areas).

Applicant only needs to provide:

Choice of school + Talent area + Contact details

[Optional] up to 10 non-school based activities and achievements.

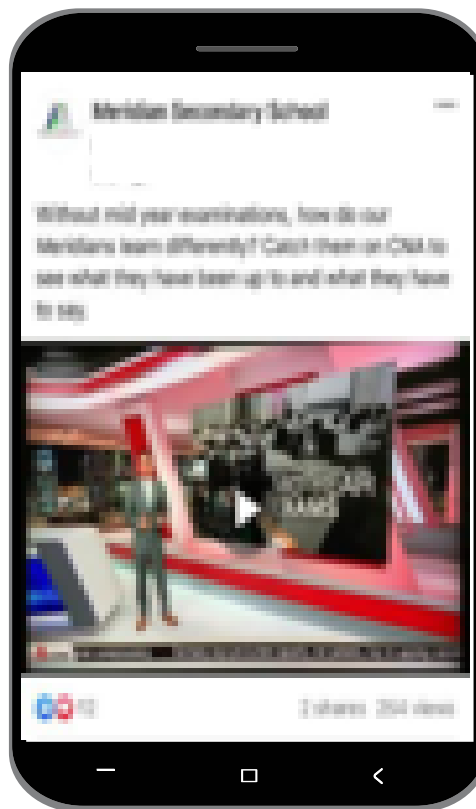
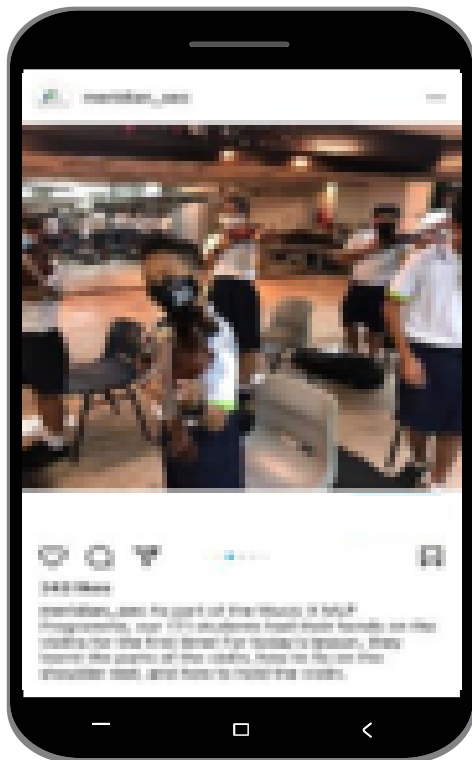
For General DSA Enquiries

Mr Quaide Millath Tel: 6583 1387 (ext. 303)
(SH PE/CCA) Email: quaide_millath@schools.gov.sg

Mr Joel Boon Tel: 6583 1387 (ext. 305)
(SH/Chemistry) Email: boon_jun_hao_joel@schools.gov.sg

School DSA Website: <https://meridiansec.moe.edu.sg/meridian-sec-direct-school-admission-dsa/>

Find out More!



Keep updated on Meridian's development and achievements.



OFFICIAL (OPEN) / NON-SENSITIVE

General Q & A

Q & A on specific Talent
Areas at Breakout
Rooms



OFFICIAL (OPEN) / NON-SENSITIVE

Resilience . Integrity . Compassion . Humility