

OFFICAL (CLOSED) \ NON-SENSITIVE

# Welcome Back!

Admissions & Briefing Slides for Release of O-Level Results





# Celebrate Efforts

The O-Level is a culmination of years of hard work and perseverance.

**Let's celebrate our efforts regardless of the results.**

Let's mark the end of the academic year by reflecting together on all our previous successes in school and the challenges we have overcome!



**Think  
about your  
opportunities**

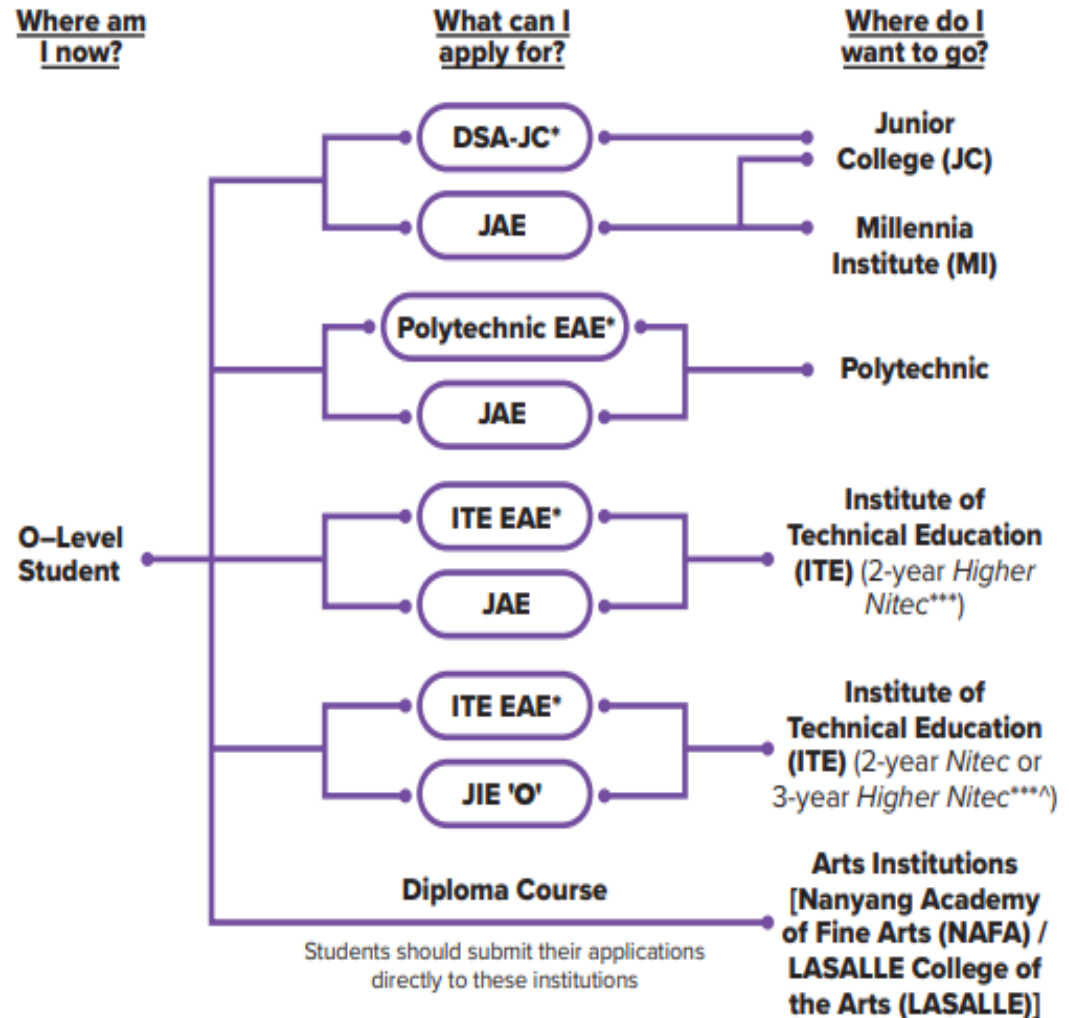


Remember that while **everyone's educational journey is different,**  
**we can each have a fulfilling outcome!**

# Multiple Pathways

- Students can transition confidently and purposefully to the next stage of their education journey.
- Education and Career Guidance.

## Admissions Exercises for O-Level Students





# Joint Admission Exercise (JAE)



Students who wish to apply for admission to Junior Colleges (JC), Millennia Institute (MI), Polytechnics, and the Institute of Technical Education (ITE) may do so via the Joint Admissions Exercise (JAE) using your GCE O-Level examination results

More information can be found on the JAE website (<https://www.moe.gov.sg/jae>).





# Release of O Level Results



Eligible students will receive a digital copy of Form A via their registered email addresses from 3pm on Friday, 10 January 2025.

All students eligible for JAE may also download a copy of Form A from the JAE-Internet System (JAE-IS) during the application period.

Form A will include:

- Your gross aggregate scores for JC, MI, polytechnic and ITE aggregate types.
- The courses that you are eligible to apply in the JAE.





# What you need to do:

Using the **Form A**,

You are required to key in your **NRIC / FIN** and **Singpass** to access the JAE-IS <https://www.moe.gov.sg/jae>

You may provide your mobile phone number if you wish to receive results of JAE application via SMS.





# What you need to do:

Sample  
Student  
Form A



Ministry of Education  
SINGAPORE

## 20XX Joint Admissions Exercise

## Form A

Name : TEST NAME 111 Address : 111 BUKIT BATOK EAST AVENUE 1 #11 -11 SINGAPORE 1111111 School Code : 1111		Centre Index No. : 222222217
---	--	------------------------------

Please apply your course choices by **DD/MM/YYYY, 04:00 PM**.

### Your 20XX GCE O-Level Examination results:

ENGLISH LANGUAGE = A1, HIGHER CHINESE = A1, CHINESE = B3, MATHEMATICS = A2, ADDITIONAL MATHEMATICS = A1, PHYSICS = B3, CHEMISTRY = B4, HUMANITIES (SOCIAL STUDIES, HISTORY) = A1, LITERATURE IN ENGLISH = B3  
 CCA = EXCELLENT

Subject description and grade obtained

Aggregate types and gross aggregate scores (excluding bonus points)

### Your aggregate scores:

JC		Polytechnic				ITE		
L1R5	L1R4	ELR2B2-A	ELR2B2-B	ELR2B2-C	ELR2B2-D	ELB4-A	ELR1B3-B	ELR2B2-C
11	8	8	8	8	8	8	8	8

### Your eligible courses:

- You meet the entry requirements for the below courses and are eligible to apply. However, a place in the course is not guaranteed as admission is based on merit, your choices and available vacancies.
- Course codes and descriptions can be found in [www.moe.gov.sg/jaecourses](http://www.moe.gov.sg/jaecourses).

Explore JAE courses

### JC/MI:

You are eligible for all JC/MI courses.

Eligible courses

### Polytechnic/ITE:

C27 C28 C29 C30 C31 C32 C34 C35 C36 C38 C41 C42 C43 C45 C46 C47 C49 C50 C51  
 C52 C54 C62 C65 C67 C69 C70 C71 C72 C73 C75 C80 C81 C85 C87 C89 C93 C94 C96  
 C97 C98 N11 N12 N13 N14 N15 N40 N41 N42 N43 N44 N45 N48 N50 N51 N53 N54 N55  
 N56 N57 N59 N60 N65 N67 N69 N71 N72 N73 N74 N81 N82 N83 N85 N88 N91 N93 N94  
 N96 N97 N98 R11 R12 R13 R14 R16 R17 R18 R19 R21 R22 R24 R25 R26 R28 R32 R33  
 R34 R35 R36 R37 R39 R40 R42 R43 R45 R46 R47 R48 R49 R50 R52 R54 R55 R56 R57  
 R58 R59 R60 R61 R62 R63 R64 R65 R66 R67 R68 R69 R70 R71 R72 R73 R74 R75 R76 R77 R78 R79 R80 R81 R82 R83 R84 R85 R86 R87 R88 R89 R90 R91 R92 R93 R94 R95 R96 R97 R98 R99  
 S53 S54 S63 S64 S66 S67 S68 S69 S70 S71 S73 S74 S75 S76 S88 S89 S90 S91 S94  
 S95 S98 S99 T01 T02 T04 T07 T08 T09 T10 T13 T18 T20 T22 T23 T25 T26 T28 T29  
 T30 T33 T35 T38 T40 T43 T45 T48 T50 T51 T53 T56 T58 T59 T60 T62 T63 T64 T65  
 T66 T67 T68 T69 T70 T71 V10 V11 V12 V13 V14 V15 V16 V17 V18 V19 V20 V21 V22  
 V23 V24 V25 V26 V27 V28 V29 V30 V35 V39 V40 V41 V42 V44 V47 V49 V52 V54 V55  
 V60 V61 V62 V63 V64 V65 V66 V67 V68 V70 V71 V72 V73 V74 V75 V77 V78 V80 V81  
 V82 V84 V85 V86 V87 V88 V89 V90 V91 V92 V93 V94 V96 V97 V98

Course codes starting with:  
 C - Nanyang Polytechnic  
 N - Ngee Ann Polytechnic  
 R - Republic Polytechnic  
 S - Singapore Polytechnic  
 T - Temasek Polytechnic  
 V - Institute of Technical Education (ITE)

### Note:

- You can also apply for 3-year Higher Nitec and 2-year Nitec courses in the Joint Intake Exercise (JIE) conducted by ITE. Please refer to [www.ite.edu.sg](http://www.ite.edu.sg) for more information.







## What you need to do:

The JAE-IS will be accessible from **4pm on Friday, 10 January 2025, to 4pm on Wednesday, 15 January 2025** for students to submit your course choices through the JAE website at [www.moe.gov.sg/jae](http://www.moe.gov.sg/jae).

Students are strongly encouraged to complete the JAE worksheet ([www.moe.gov.sg/jaeworksheet](http://www.moe.gov.sg/jaeworksheet)) before submitting your online application. The JAE-IS can be accessed using Singpass.





## What you need to do:

Students can find more information on the following MOE websites:

- JAE website for more details on the JAE ([www.moe.gov.sg/jae](http://www.moe.gov.sg/jae))
- SchoolFinder for details of the offerings by JCs and MI, and their previous entry score ranges ([www.moe.gov.sg/schoolfinder](http://www.moe.gov.sg/schoolfinder))
- CourseFinder for courses offered by the polytechnics and ITE, based on aggregate type and area of interest ([www.moe.gov.sg/coursefinder](http://www.moe.gov.sg/coursefinder))





# Application for Joint Admissions Exercise (JAE)



Application will commence from:

**4.00 pm on Friday, 10 January 2025**

Ends at:

**4.00 pm on Wednesday, 15 January 2025**

Release of Posting Results: **Tuesday, 4 February 2025**

Results will be released through the following modes:

- Short Message Service (SMS) to the Singapore mobile phone number provided by the applicant during registration
- JAE-IS, which is accessible through the JAE website





# Application Results – Acceptance of Offer



- Students posted to **JCs and MI** are to report to your posted institutions on **Wednesday, 5 February 2025**.

If students are unable to report to your posted JC or MI on the first day of school due to valid reasons, you may contact your posted school directly to confirm that you are taking up the place, and the school will be able to reserve the place for you.

- Students posted to ITE will receive an email with the enrolment details on **Tuesday, 4 February 2025**.
- Students posted to polytechnics will receive your enrolment details by **end-February 2025**





# 1. Direct School Admission - JC

- Students who had accepted offers through the 2024 Direct School Admission – Junior Colleges (DSA-JC) will be admitted to your chosen JC if you have met the eligibility criteria for admission based on your GCE O-Level examination results.
- Students admitted to a JC through DSA-JC will not be eligible to participate in the JAE.
- Students who do not meet the JC admission criteria may take part in the JAE to apply for other courses which you are eligible for.





## 2. Early Admissions Exercise (EAE) - Polytechnics

Students who had earlier accepted conditional offers to a polytechnic course through the Polytechnic Early Admissions Exercise (EAE) in 2024, will have your offers confirmed and will not be eligible to participate in the JAE, if they meet the following criteria:

- a) A net **ELR2B2 score of 26 points or lower** for the GCE O-Level examinations; and
- b) Minimum Entry Requirements for the respective polytechnic courses.

Students who do not meet the above criteria may still apply for polytechnic admission via the JAE for courses which you are eligible for.





### 3. Early Admissions Exercise (EAE) – ITE



Students who had accepted conditional offers to an ITE course through the ITE EAE in 2024 will have your offers confirmed based on their GCE O-Level examination results once you meet the subject-specific Minimum Entry Requirements for the course.

Their EAE offers are confirmed if they meet the subject-specific Minimum Entry Requirements for the course.



# Details of Admissions Exercises



## JAE – Joint Admissions Exercise

JAE enables GCE O-Level holders to apply for admissions to courses offered by JCs, MI, polytechnics and ITE 2-year *Higher Nitec*.



[go.gov.sg/applyjae](https://go.gov.sg/applyjae)



## JIE 'O' – Joint Intake Exercise 'O'

The JIE 'O' is conducted to enable GCE O-Level holders to apply for the 2-year *Nitec* or 3-year *Higher Nitec* courses conducted by ITE.



[go.gov.sg/applyjie](https://go.gov.sg/applyjie)



# Details of Admissions Exercises



## **Arts Institutions – NAFA/ LASALLE**

GCE O-Level holders with the aptitude and interest to pursue the creative arts at the tertiary level may apply for diploma programmes at the Arts Institutions (AIs). Each AI runs its own admissions exercise, and interested students should apply directly to the institution.



[go.gov.sg/nafa-applynow](https://go.gov.sg/nafa-applynow)



[go.gov.sg/laselle-applynow](https://go.gov.sg/laselle-applynow)



## 4. Progression Pathways for Secondary Four Normal (Academic) Students



Secondary 4 Normal (Academic) [N(A)] students who have sat for GCE O-Level subjects in 2024 can use their GCE O-Level results for these subjects to apply for:

1. Polytechnic Foundation Programme (PFP)
2. Direct-Entry-Scheme to Polytechnic Programme (DPP).





# Progression Pathways for Secondary Four Normal (Academic) Students



## 4a. Polytechnic Foundation Programme (PFP)

Students are eligible to apply for the PFP if you obtain:

- A raw **ELMAB3** aggregate of **12 points or lower**,
- Meet the subject-specific requirements for your chosen course.

PFP-eligible students who had taken GCE O-Level subjects will receive a copy of **Form P (contains unique password)**

Submit your applications online via the PFP website at:  
<https://pfp.polytechnic.edu.sg/PFP/index.html>.





# Progression Pathways for Secondary Four Normal (Academic) Students



## 4a. Polytechnic Foundation Programme (PFP)

Applications for the PFP from:

**1.30 pm on Friday, 10 January 2025 to 4.00pm on Wednesday, 15 January 2025.**

Release of PFP posting results from:

**1.30 pm on Wednesday, 22 January 2025** (through the PFP website)

Students will be required to indicate whether you wish to accept, reject, or appeal for a change of course **by 4.00 pm on Monday 27 January 2025.**





# Progression Pathways for Secondary Four Normal (Academic) Students



## 4b. Direct-Entry Scheme to Polytechnic Programme (DPP)

Final application phase for DPP from:

**12 am on Friday, 10 January 2025 to 11.59 pm Tuesday, 14 January 2025.**

Release of DPP posting results (final application phase) from:

**9.00 am on Wednesday, 17 January 2025** through the DPP application portal.

Students to indicate whether you wish to accept or reject the DPP offer by **11.59 pm on Tuesday, 21 January 2025.**

DPP application portal: [www.ite.edu.sg/apply-for-ite-courses](http://www.ite.edu.sg/apply-for-ite-courses)





# For Successful PFP/DPP Applicants



- Students offered a place in the **DPP** under the final application phase should report to ITE on **Wednesday, 22 January 2025** upon acceptance of the DPP course offer.
- Last day of school for **current Sec 5** students who have accepted a place in the **PFP** will be on **Friday, 31 January 2025**.
- Students will be informed by the respective polytechnics on the enrolment dates for the PFP.

## Note:

Students who have accepted a place in the earlier application phase of the DPP in December but decide to take up a PFP offer now **must withdraw from the DPP first** before you are able to take up the PFP offer. Check with ITE class advisor for withdrawal process.





## 5. Retention Procedure for Sec 4E / 5N



Obtain the application form (Annex C) to repeat Sec 4E / 5N from school website. Complete and submit it to the General Office by **Wednesday, 15 January 2025**. There will be a meeting with your parents with the School Leaders.

Successful applicants are to re-validate the SSC (Student Smart Card) for concessionary travel granted by TransitLink Pte Ltd (TL).

Students who do not meet the retention criteria are to pursue post-secondary options that they qualify for.

Students can consider part-time ITE General Education Programme. This programme is heavily subsidised and allows students to repeat specific subjects. More information can be found at <https://www.ite.edu.sg/courses/part-time-courses/general-education>.





## 5. Retention Criteria for Sec 4E / 5N

Sec 4E and Sec 5N(A) students are eligible to repeat their GCE O-Level Examination if they satisfy all the following criteria:

- i. No more than 2 GCE O-Level passes (i.e. C6 or better) and an aggregate of 44 points or less in 5 subjects (excluding bonus points), or
- ii. 3 or more GCE O-Level passes (i.e. C6 or better) but do not qualify for admission to junior colleges, Millennia Institute or polytechnics

**Note:** Students who do not meet the retention criteria to pursue post-secondary options that you qualify for may consider the part-time ITE General Education Programme.

The programme is heavily subsidised and allows students to repeat specific subjects.

More information can be found <https://www.ite.edu.sg/courses/part-time-courses/general-education>







## 6. APPEAL PROCEDURE FOR REVIEW OF RESULTS

- Students who had sat for 2024 GCE O-Level examination may apply to appeal for a review of your results\*.
- All appeals by students together with the payment of appeal fees (estimated \$114.45) must be submitted through schools by **Thursday, 16 January 2025**.
- Applications submitted after the closing date will not be considered the application.
- Students will be informed of the outcome via email through the school (**Monday 24 February 2025**)





## 7. Certificate Amendment Request



- Students may request for a re-print of your current exam year certificate only if your name has been printed wrongly due to misspelling. Other reasons for re-printing of certificates will not be accepted.
- There is an administrative fee of S\$50.00 (inclusive of GST) for the amendment of each GCE O-Level certificate.
- The closing date is for amendment request is **Thursday, 16 January 2025**. Each request will be reviewed and is subjected to approval. Any requests received after 16 January 2025 will not be considered.



# Education & Career Guidance (ECG)

- Please approach our **ECG Counsellor, Ms Cheryl**, who is positioned at the side of the hall today.
- For further support and guidance, you can also **make an appointment** with Ms Cheryl by scanning the QR code or via: <https://go.gov.sg/ecg-mscheryl>
- For ECG support on JAE, appointment slots will be available on **13-15 January 2025** from 8:00am – 4:30pm.



<https://go.gov.sg/ecg-mscheryl>



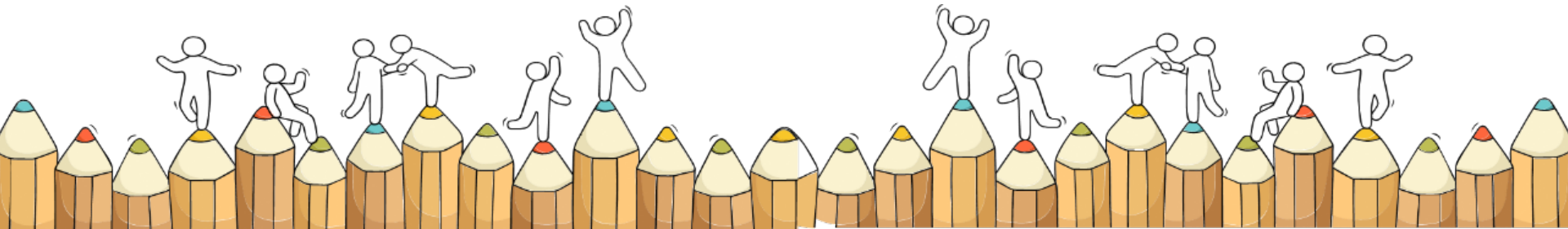
# OPEN HOUSE



Keep a lookout for Open House by various higher institutions.



# For Students Considering Private Education



# The 3Rs when deciding on Private Education

## Reasons

- Why are you furthering your studies?
- What are the job prospects for your preferred course?

## Readiness

- How ready are you to further your studies?
- Can you cope with the academic rigour and assignment deadlines?
- Can you fund your studies?

## Risks

- Do you know the possible drawbacks?
  - Your expected returns may not exceed the investments you put into your private education.
  - Private schools may make exaggerated claims.
  - Private schools may close due to various reasons.
  - You may not get a full refund if you withdraw from your course.

<https://go.gov.sg/3rs>



# 8 Things You Should Know Before You Enrol in A Private School



## School Registration

Ensure the school is registered with SkillsFuture Singapore (SSG). Review the school's registration period, expiry date and its overall registration track record.



## Partner Institution

Research on the partner institution conferring the diploma or degree, and whether the qualification is recognised by the industry.

## EduTrust Certification Scheme

Is the school EduTrust-certified\*? Under the scheme, private schools are assessed for their performance in areas such as school management and provision of student support services.



*\*Schools are required to obtain EduTrust certification in order to offer external degree programmes*

## School Premises

Head down to the campus ground to check the facilities and support services. Observe the study environment too.



## Fee Protection



Ask if there is any course fee protection so that you will be able to recover unconsumed course fees should the school close down.

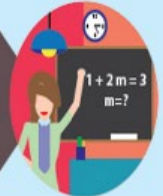
## Beyond Course fees



Find out about the course syllabus and materials, graduation rates and employment prospects. Approach the alumni to find out what they think of the school.

## Teachers

Check if the teachers are qualified to teach the course.



## Internship

If industry attachment is included, find out which organisation you will be attached to, the period of attachment and the alternative arrangement should the attachment become unavailable. Verify the information with the organisation as well.



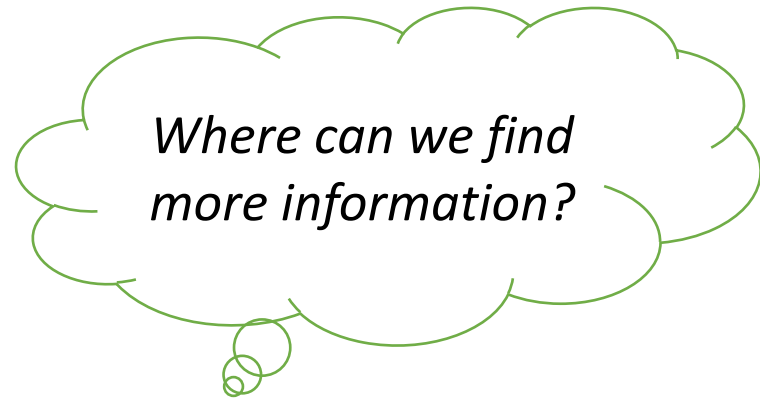
OFFICAL (CLOSED) \ NON-SENSITIVE

# Resources to help you make informed decisions



## About MySkillsFuture

A one-stop portal that empowers you to embark on a journey of self-discovery and make informed education and career choices. Use the information and tools to explore various education and career pathways, and take charge of your future.



<https://go.gov.sg/mySFsec>



<https://go.gov.sg/mysfsec>



## Administrative Matters - Documents to receive from FTs

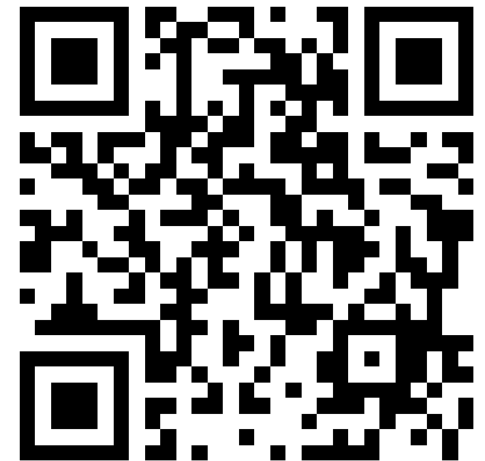
1. GCE O Level Certificate
2. Form A (Apply before deadline)

### Required School-Based Response (for school's monitoring purposes)

For 4E5N students:

<https://forms.moe.edu.sg/forms/vwZazx>

12 noon, Friday 17 Jan 2025



OFFICAL (CLOSED) \ NON-SENSITIVE

The O-Level is not the destination.

It is part of your education journey.

**All the Best!**

